

South West Congenital Anomaly Register (SWCAR) Clefting data 2002 to 2005

South Wales South West Managed Clinical Network
Network Day 27th November 2006

27th November 2006

Aileen McLoughlin SWCAR Co-ordinator

Our Aims

- To improve detection rates
 - Office for National Statistics (ONS) acknowledges data collection is currently incomplete and existing registers have demonstrated improved detection rates.
 - 2003 Anomaly rates for regions covered by registers 159 per 10,000. Other areas 73 per 10,000 (ONS,2003)
 - 2004 Anomaly rates for regions covered by registers 150 per 10,000. Other areas 52 per 10,000 (ONS,2003)
- To provide accurate reliable data on congenital anomalies in the South West

27th November 2006

Aileen McLoughlin SWCAR Co-ordinator

Where does the data come from?

- All maternity units in South West Region
- All associated diagnostic departments: antenatal ultrasound, fetal medicine, neonatal units, paediatric specialities, clinical genetics, cytogenetics and pathology
- Neighbouring regional registers
- National specialist registers
- Office for National Statistics
- Hospital IT departments

27th November 2006

Aileen McLoughlin SWCAR Co-ordinator

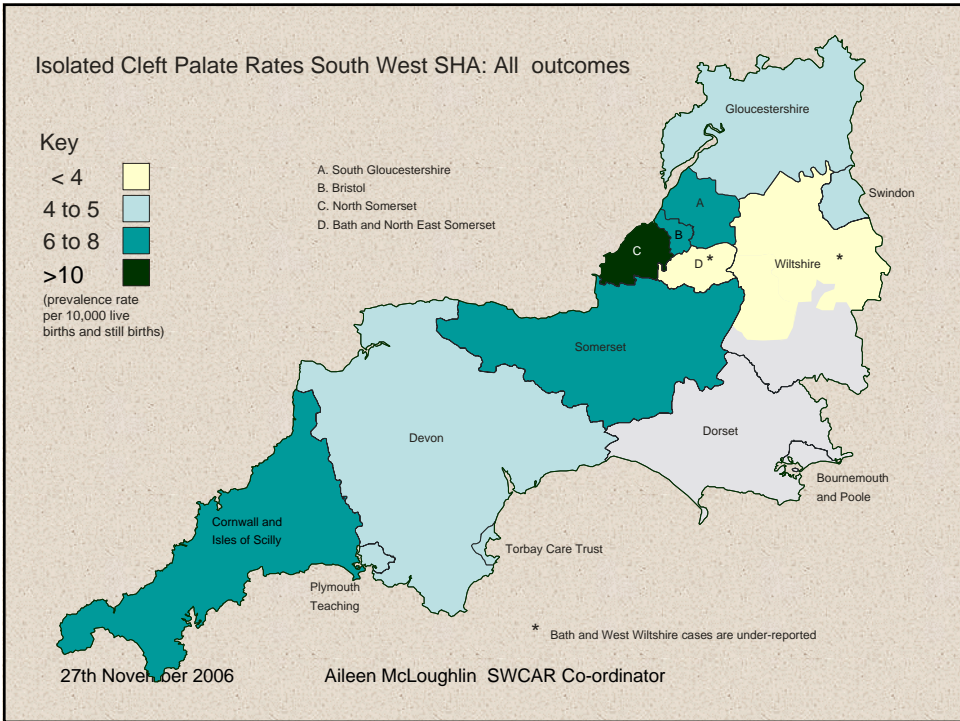
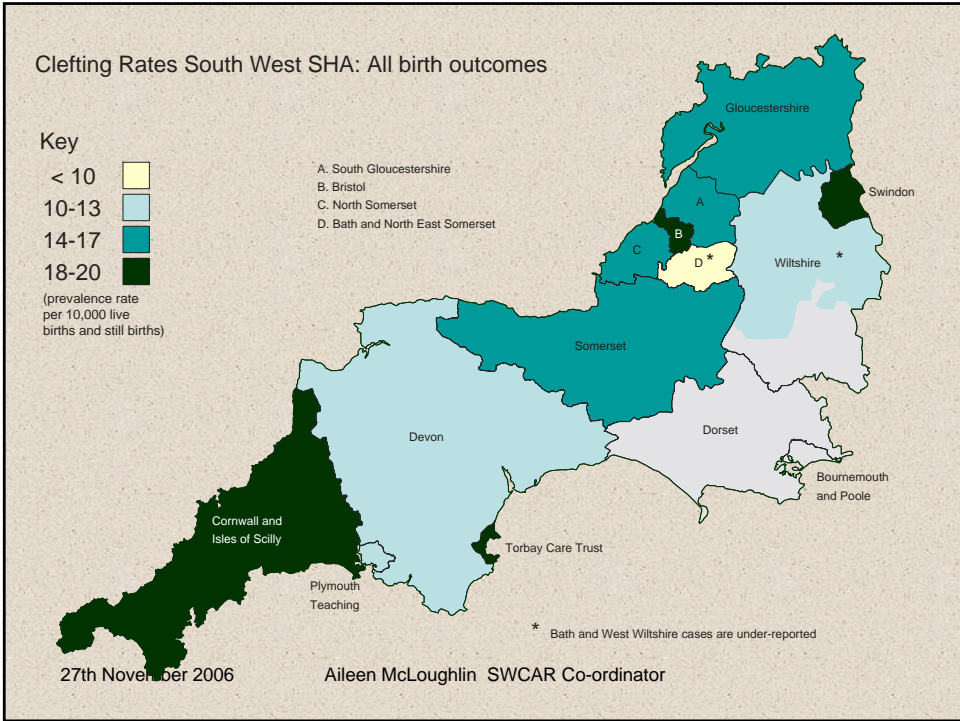
SWCAR Confirmed Clefting Cases notified 2002 to 2005

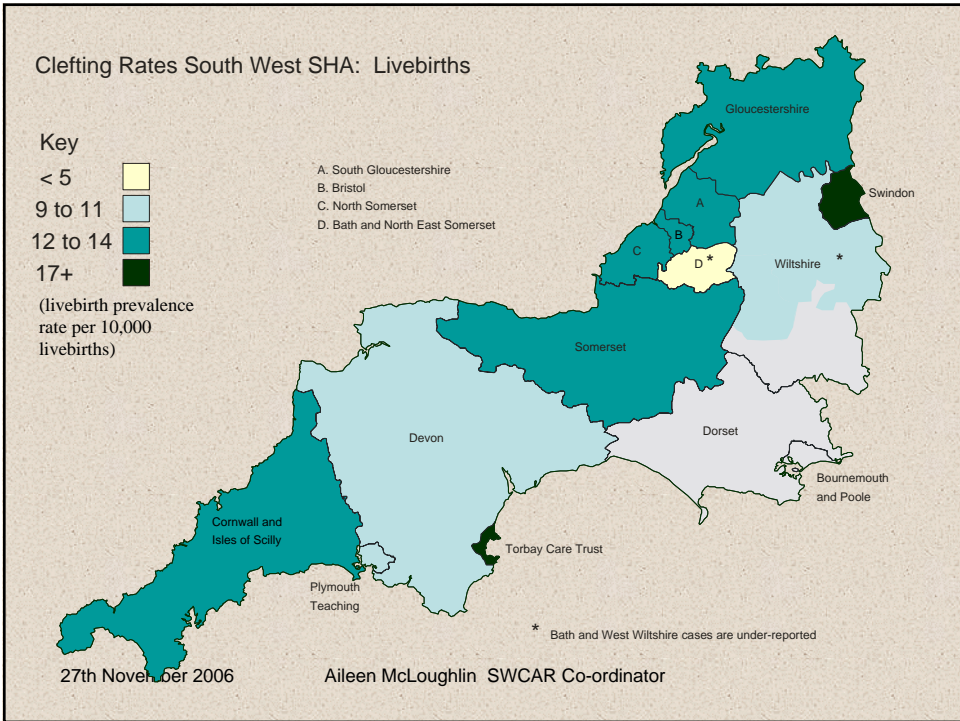
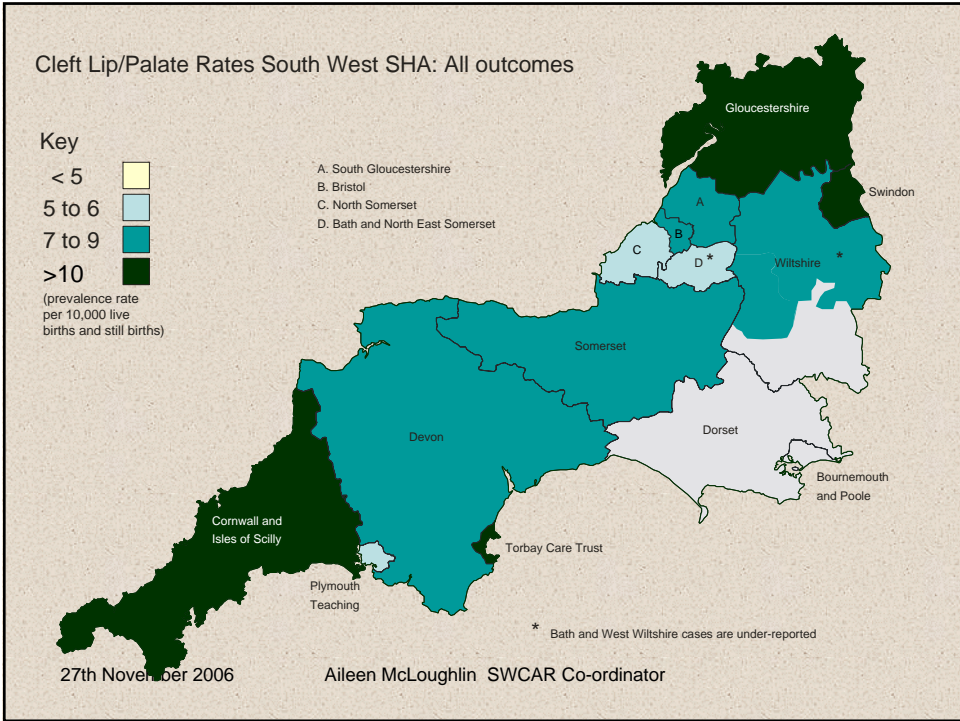
Year	Clefting	Isolated cleft palate	Cleft lip/palate	Alveolar clefting
2002	74	32	42	
2003	66	21	44	1
2004	81	31	49	1
2005	58	19	38	1
Total	279	103	173	3

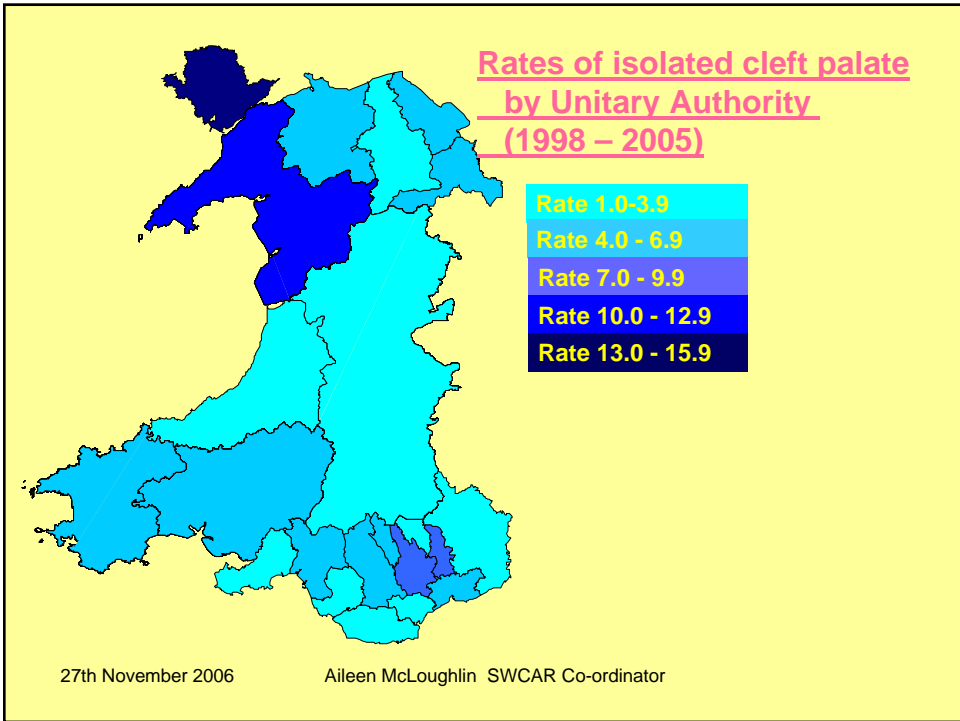
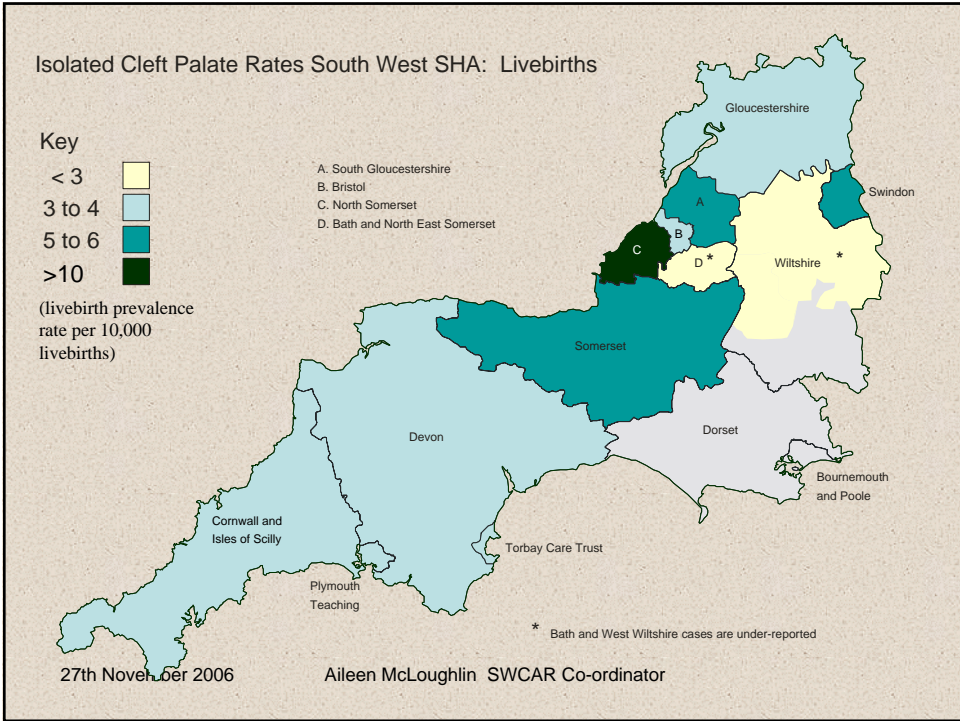
SWCAR collects data on ALL notified clefts. Cases where other major anomalies are present (neural tube defects, chromosomal anomalies, major brain or cardiac anomalies) are included in the totals given above.

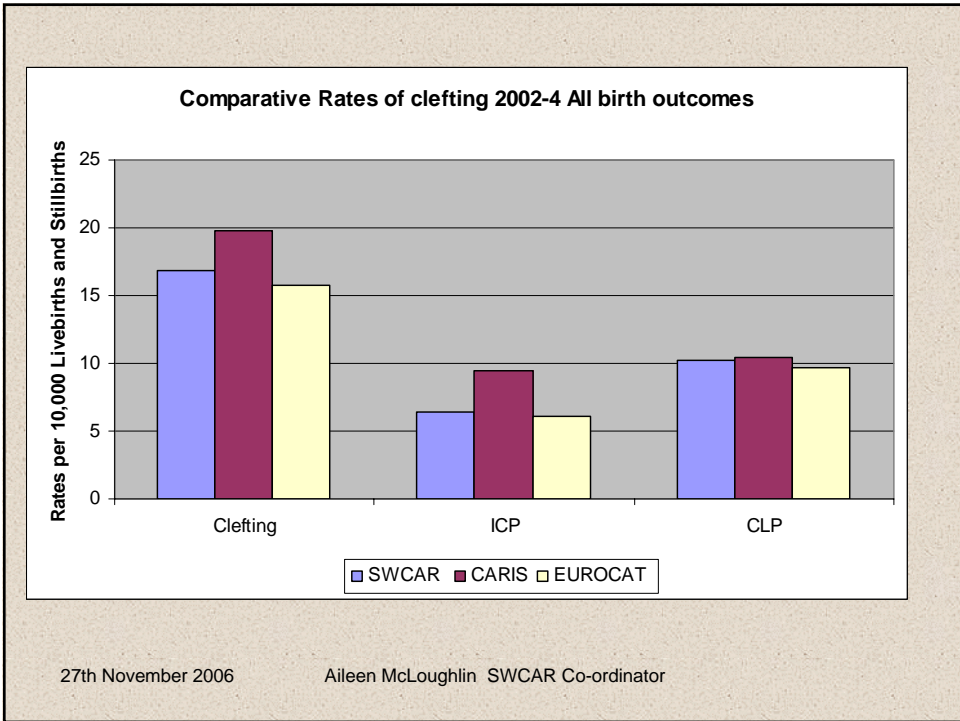
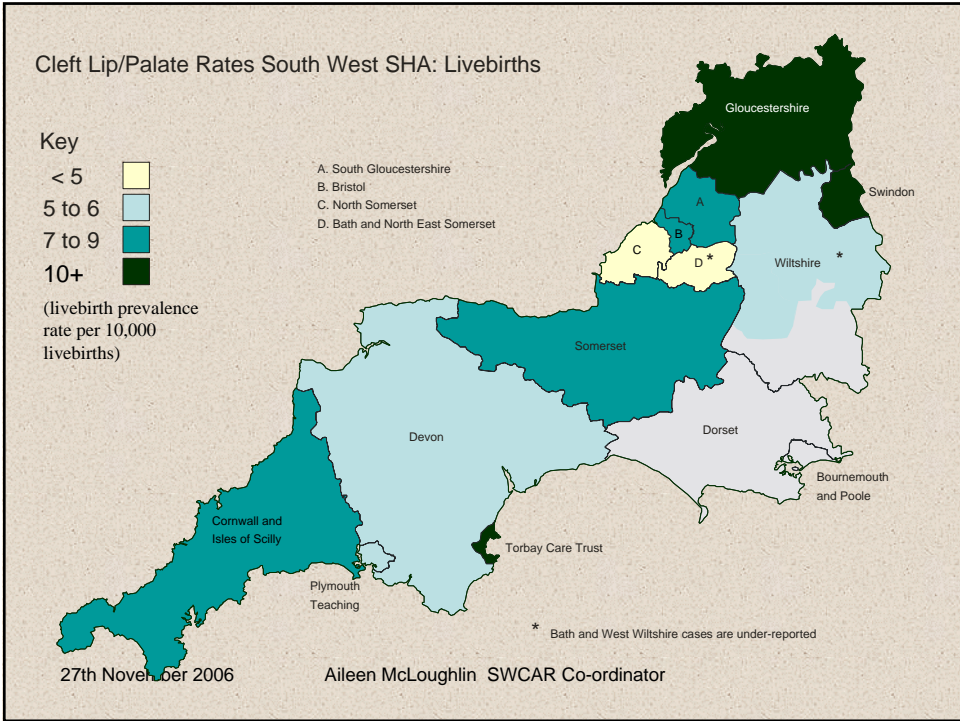
27th November 2006

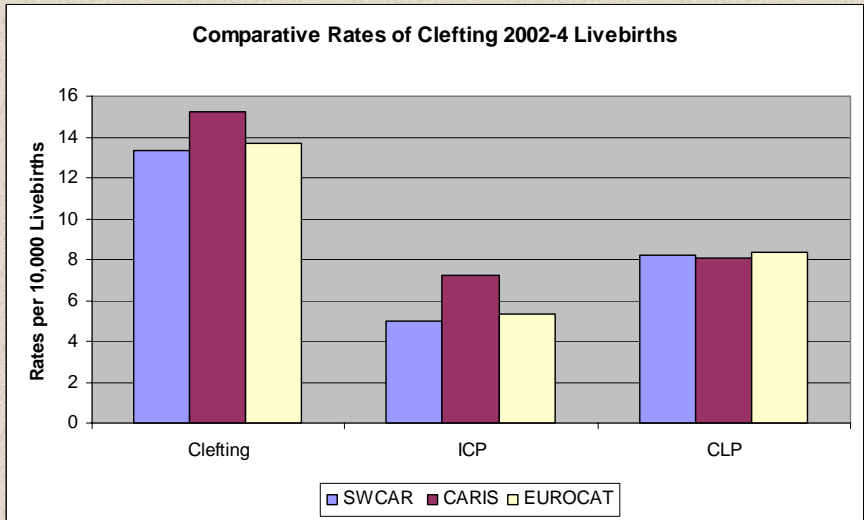
Aileen McLoughlin SWCAR Co-ordinator





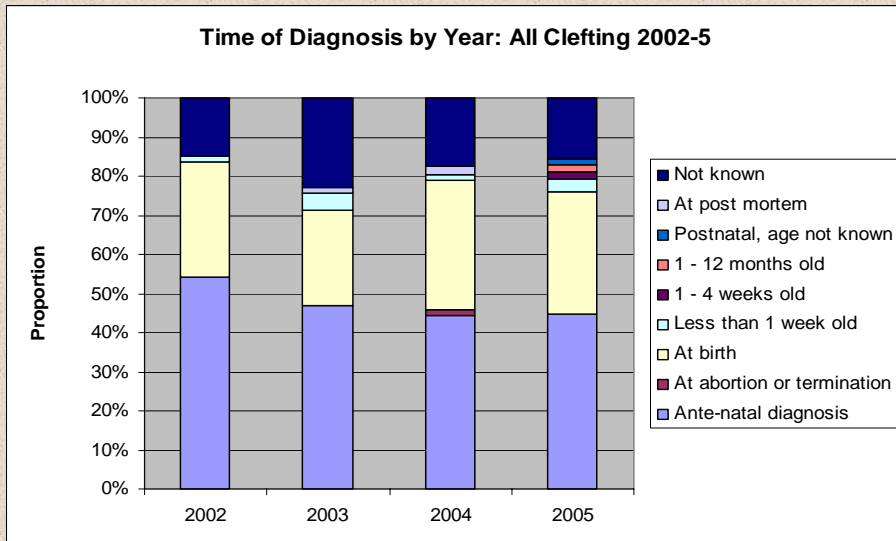






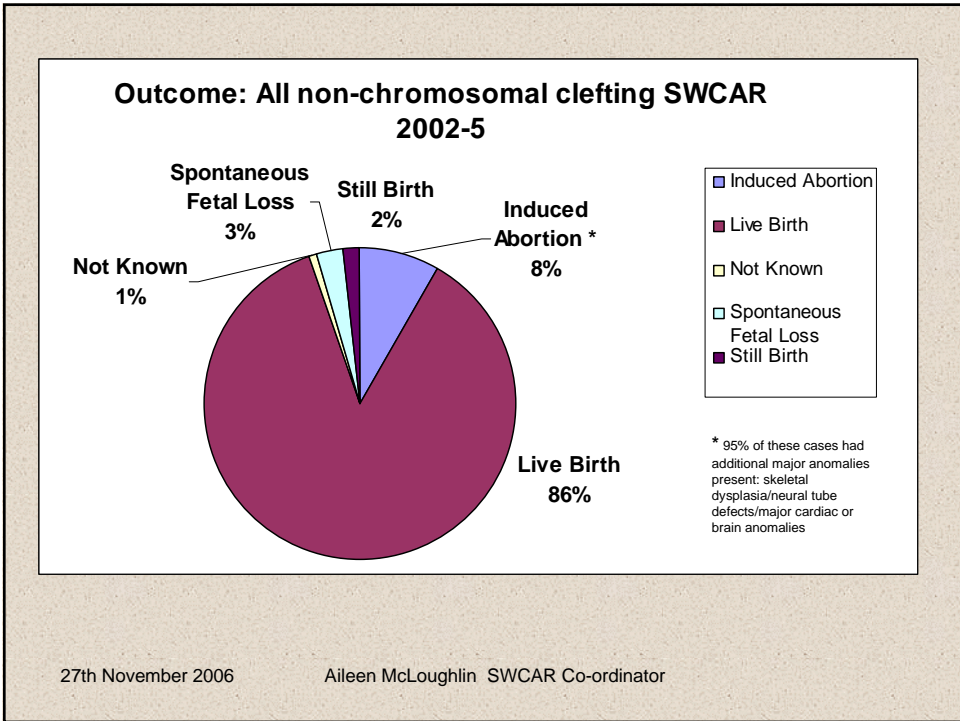
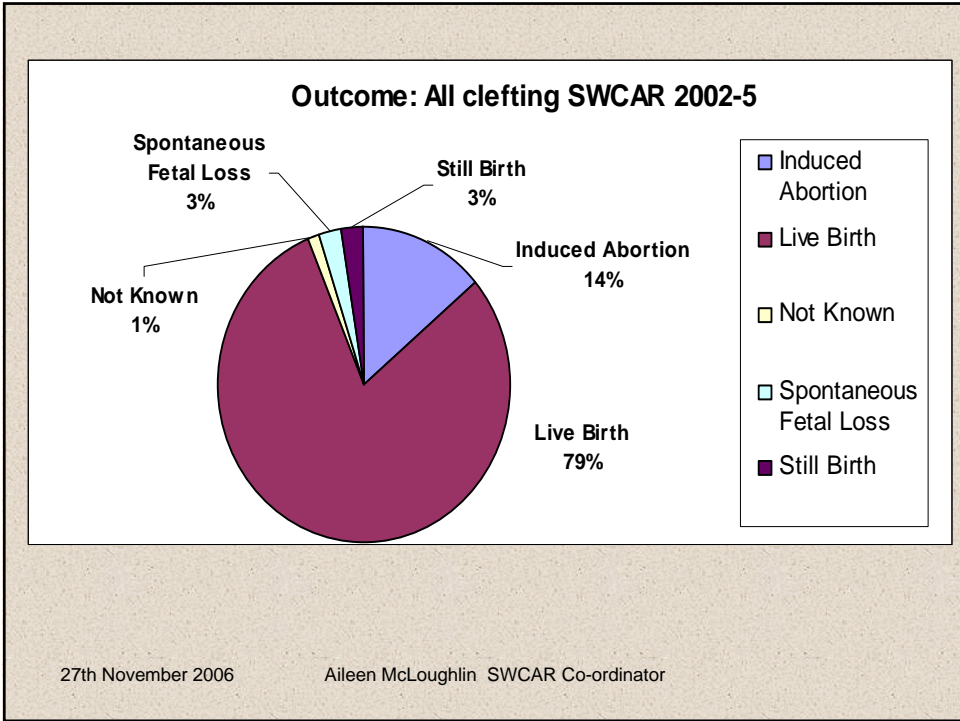
27th November 2006

Aileen McLoughlin SWCAR Co-ordinator

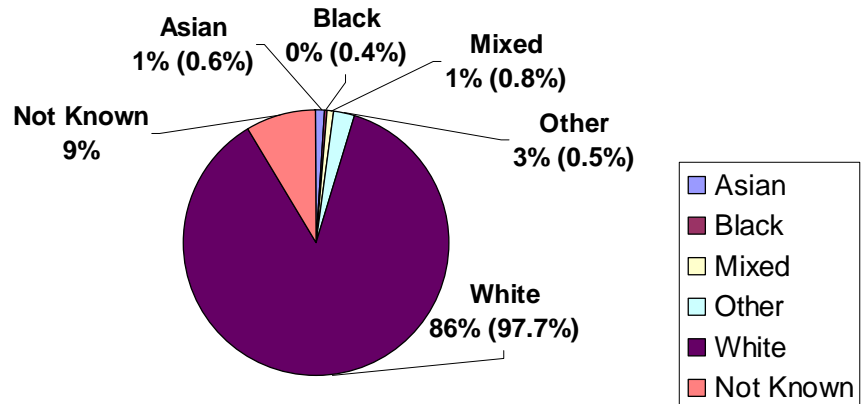


27th November 2006

Aileen McLoughlin SWCAR Co-ordinator



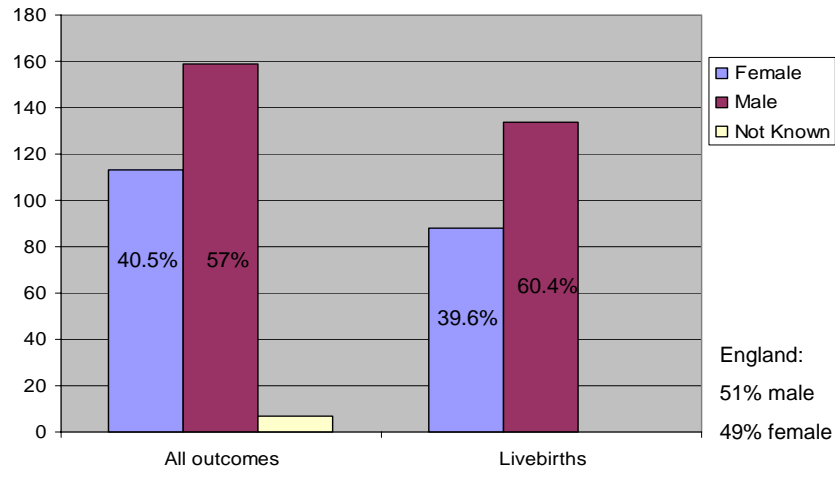
All clefting by ethnic category of mother (% in brackets give South West population ethnicity from the 2001 Census)



27th November 2006

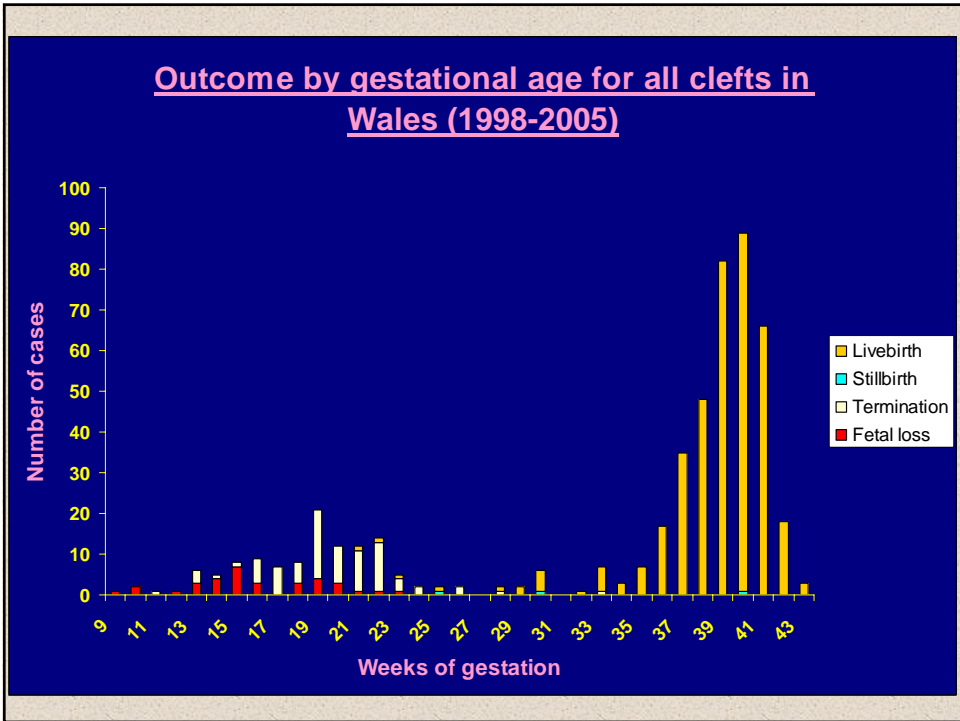
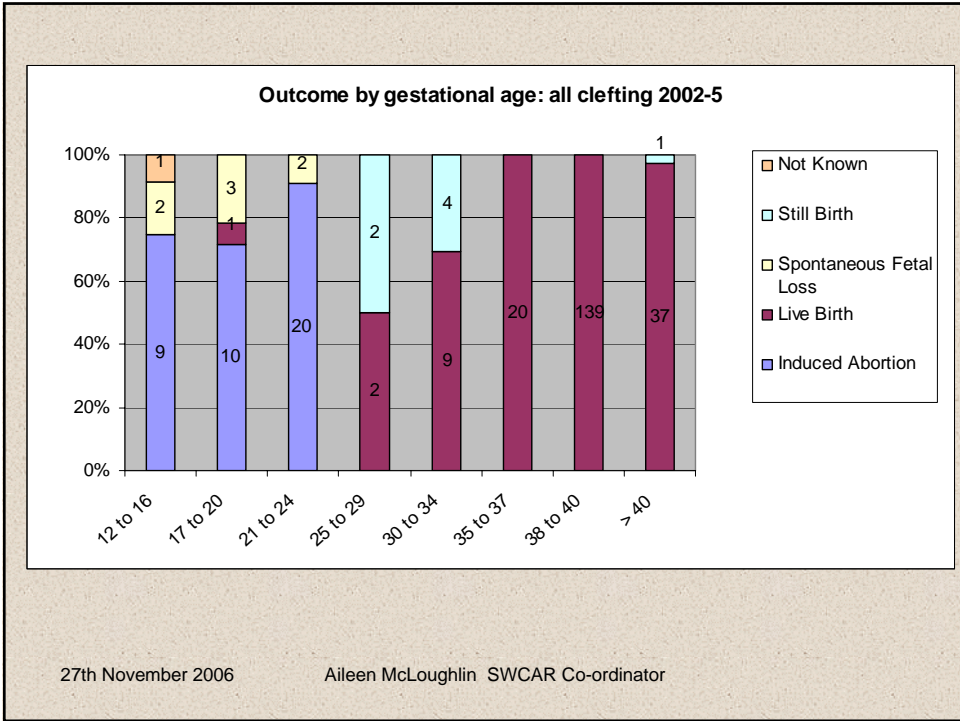
Aileen McLoughlin SWCAR Co-ordinator

Clefting by gender: All Outcomes and Livebirths 2002-5

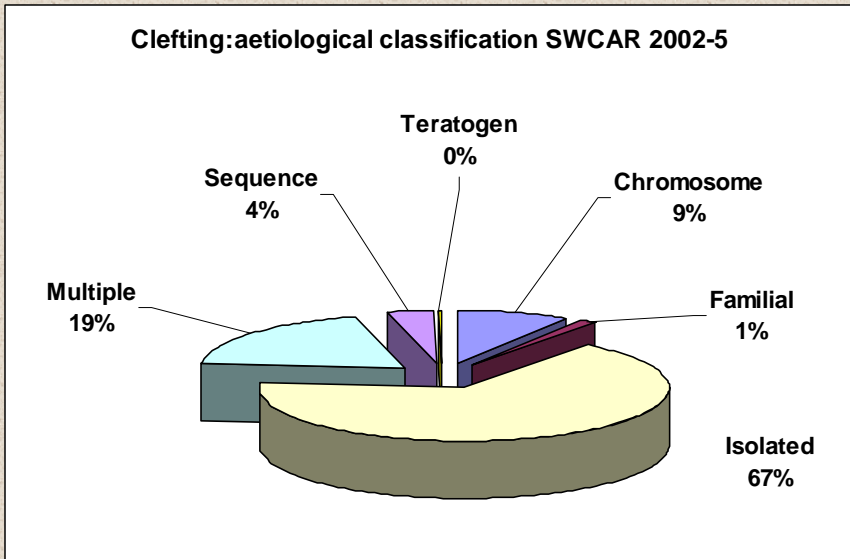


27th November 2006

Aileen McLoughlin SWCAR Co-ordinator



Clefting: aetiological classification SWCAR 2002-5



27th November 2006

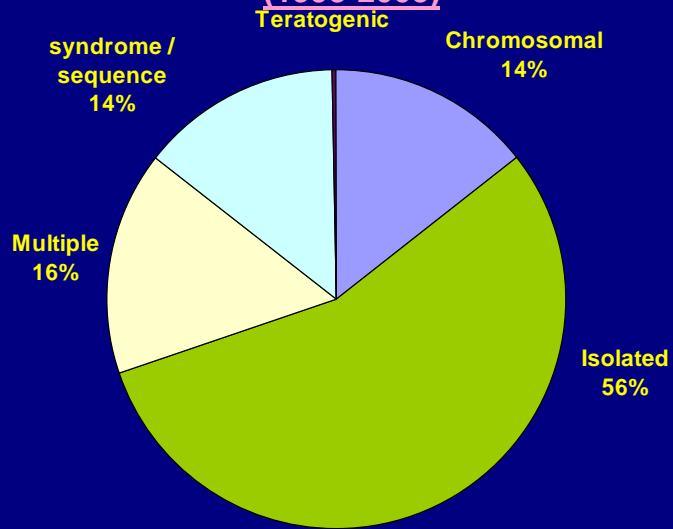
Aileen McLoughlin SWCAR Co-ordinator

Sequences	
Pierre Robin	9
Vater	1
Chromosomal	
Edwards	6
Patau	12
Trisomy 9	1
Deletions	3
Unbalanced translocations	2
Triploidy	1
Other	1
Familial	
Short rib polydactyly syndrome	1
Lethal multiple pterygium syndrome	1
Oro-facial-digital syndrome type I	1
Treacher-Collins syndrome	1

27th November 2006

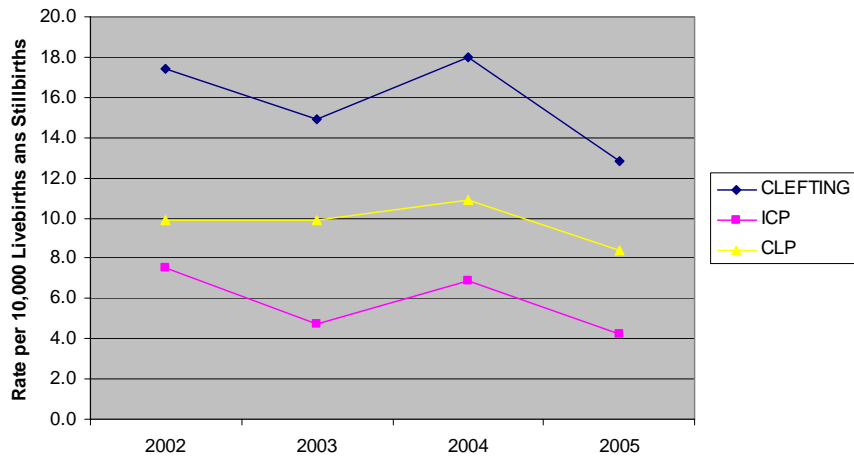
Aileen McLoughlin SWCAR Co-ordinator

**All clefts in Wales by aetiological classification
(1998-2005)**

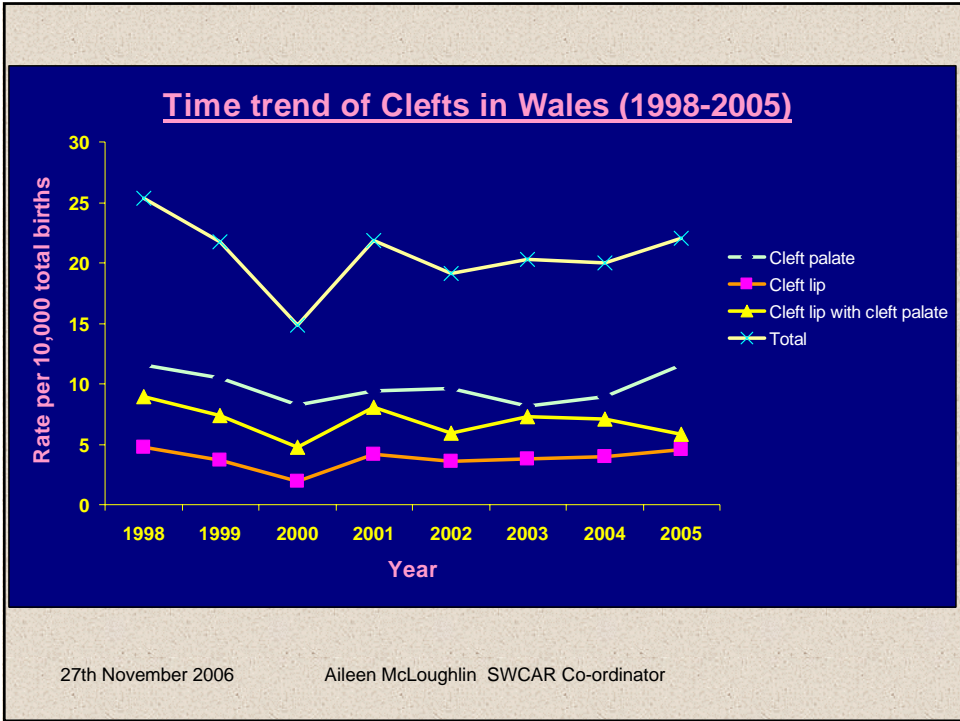


27th November 2006 Aileen McLoughlin SWCAR Co-ordinator

Time trend of South West Clefting 2002-2005



27th November 2006 Aileen McLoughlin SWCAR Co-ordinator



South West Congenital Anomaly Register



The anomaly web site for the south west

- Anomaly rates for the region and hospitals
- Anomaly rates for conditions and body systems
- How and what to report
- All our leaflets and forms for download
- Links to over 150 support organisations
- Links to medical and genetics web sites
- All you need to know about the Register



www.swcar.org.uk

27th November 2006 Aileen McLoughlin SWCAR Co-ordinator