

South West Congenital Anomaly Register (SWCAR) Clefting data 2002 to 2005

South Wales South West Managed Clinical Network
Network Day 27th November 2006

27th November 2006

Aileen McLoughlin SWCAR Co-ordinator

Our Aims

- To improve detection rates
 - Office for National Statistics (ONS) acknowledges data collection is currently incomplete and existing registers have demonstrated improved detection rates.
 - 2003 Anomaly rates for regions covered by registers 159 per 10,000. Other areas 73 per 10,000 (ONS,2003)
 - 2004 Anomaly rates for regions covered by registers 150 per 10,000. Other areas 52 per 10,000 (ONS,2003)
- To provide accurate reliable data on congenital anomalies in the South West

Where does the data come from?

- All maternity units in South West Region
- All associated diagnostic departments: antenatal ultrasound, fetal medicine, neonatal units, paediatric specialities, clinical genetics, cytogenetics and pathology
- Neighbouring regional registers
- National specialist registers
- Office for National Statistics
- Hospital IT departments

SWCAR Confirmed Clefting Cases notified 2002 to 2005

Year	Clefting	Isolated cleft palate	Cleft lip/palate	Alveolar clefting
2002	74	32	42	
2003	66	21	44	1
2004	81	31	49	1
2005	58	19	38	1
Total	279	103	173	3

SWCAR collects data on ALL notified clefts. Cases where other major anomalies are present (neural tube defects, chromosomal anomalies, major brain or cardiac anomalies) are included in the totals given above.

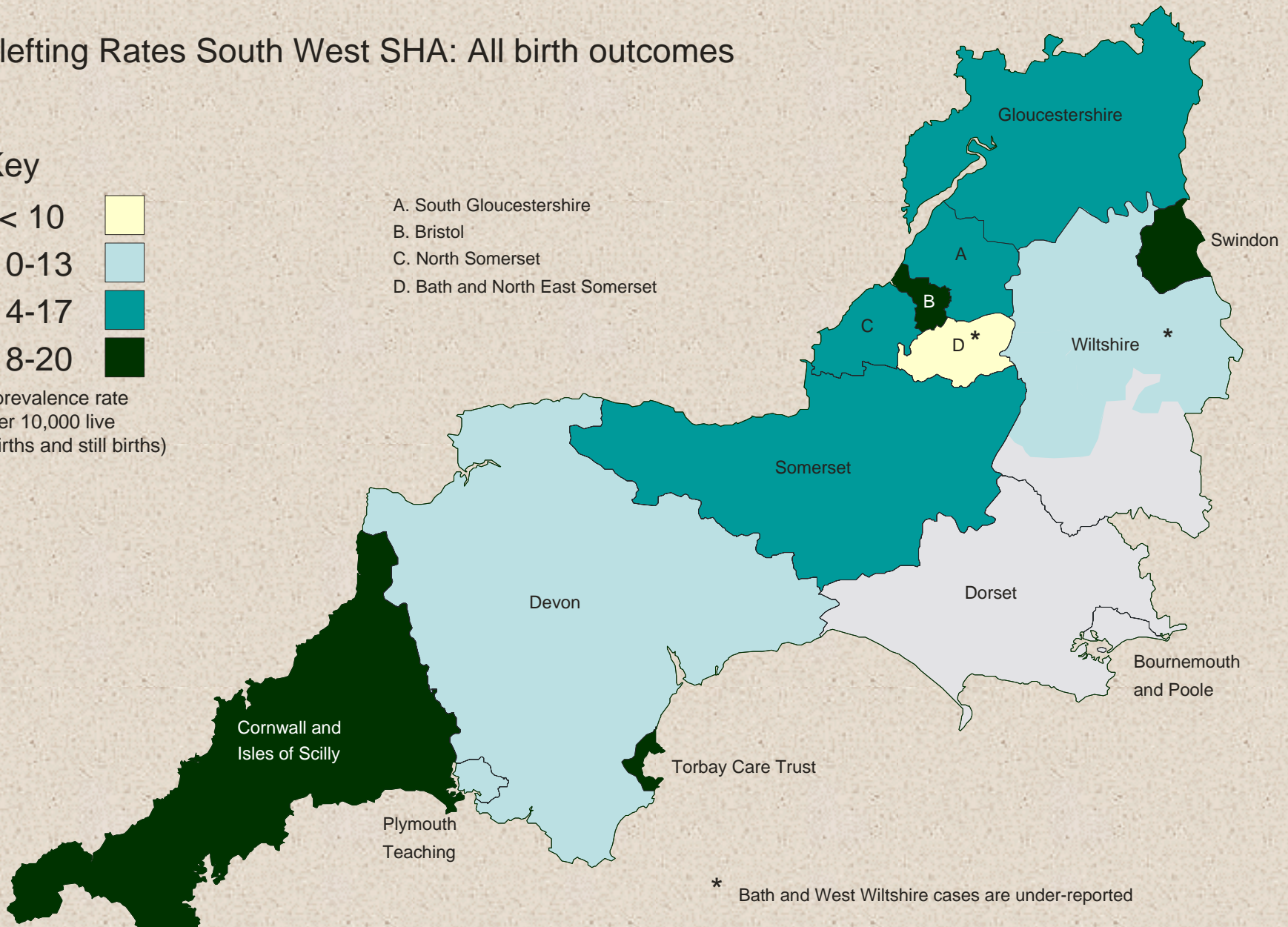
Clefting Rates South West SHA: All birth outcomes

Key



(prevalence rate per 10,000 live births and still births)

- A. South Gloucestershire
- B. Bristol
- C. North Somerset
- D. Bath and North East Somerset



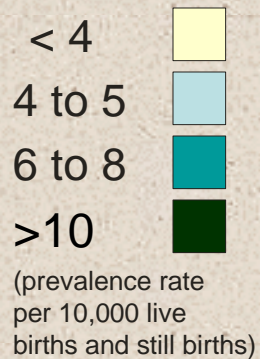
* Bath and West Wiltshire cases are under-reported

27th November 2006

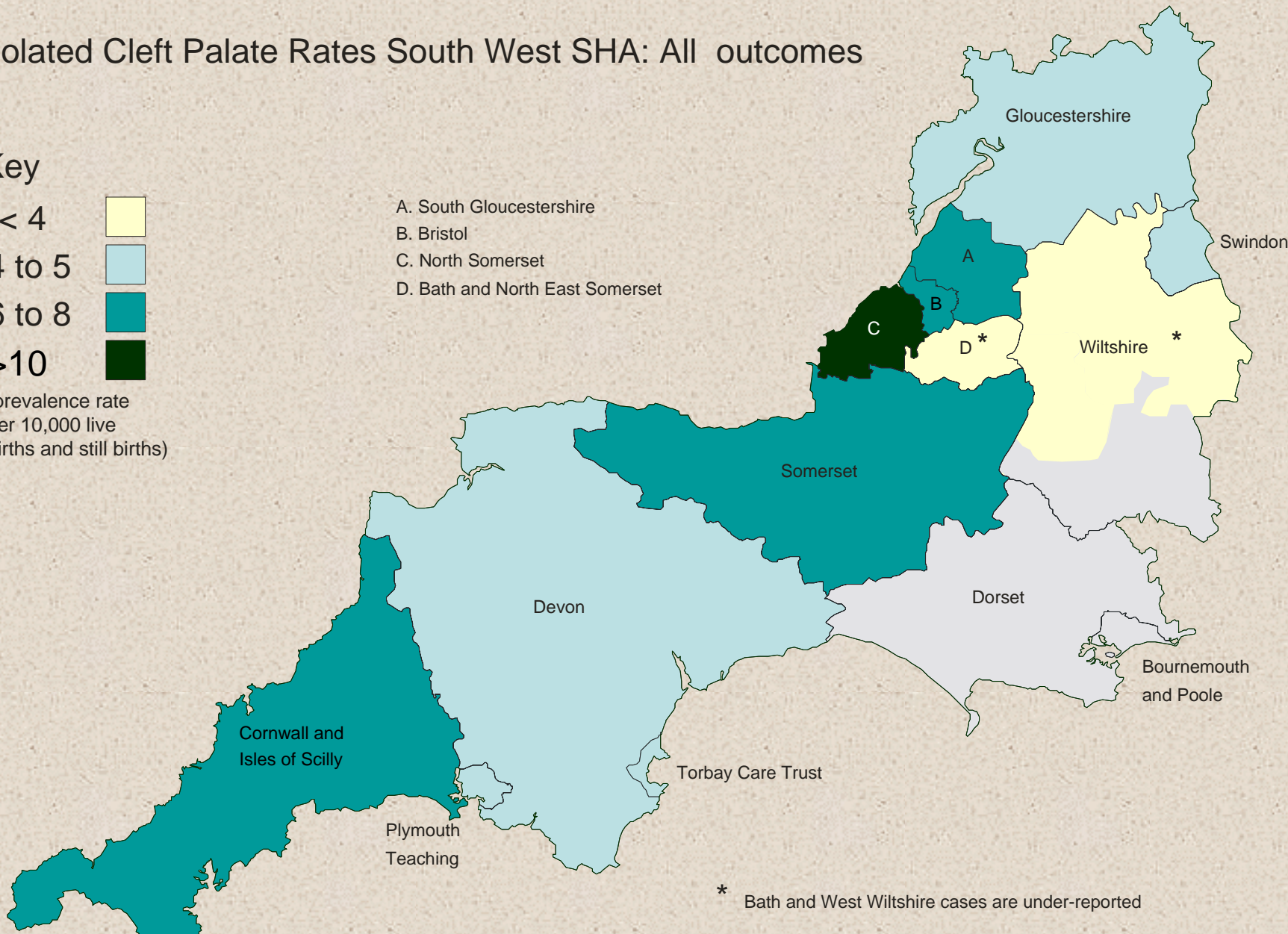
Aileen McLoughlin SWCAR Co-ordinator

Isolated Cleft Palate Rates South West SHA: All outcomes

Key



- A. South Gloucestershire
- B. Bristol
- C. North Somerset
- D. Bath and North East Somerset



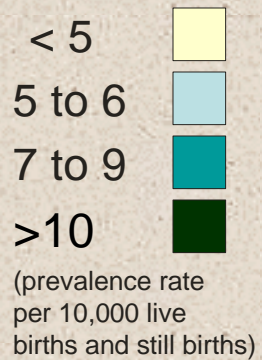
* Bath and West Wiltshire cases are under-reported

27th November 2006

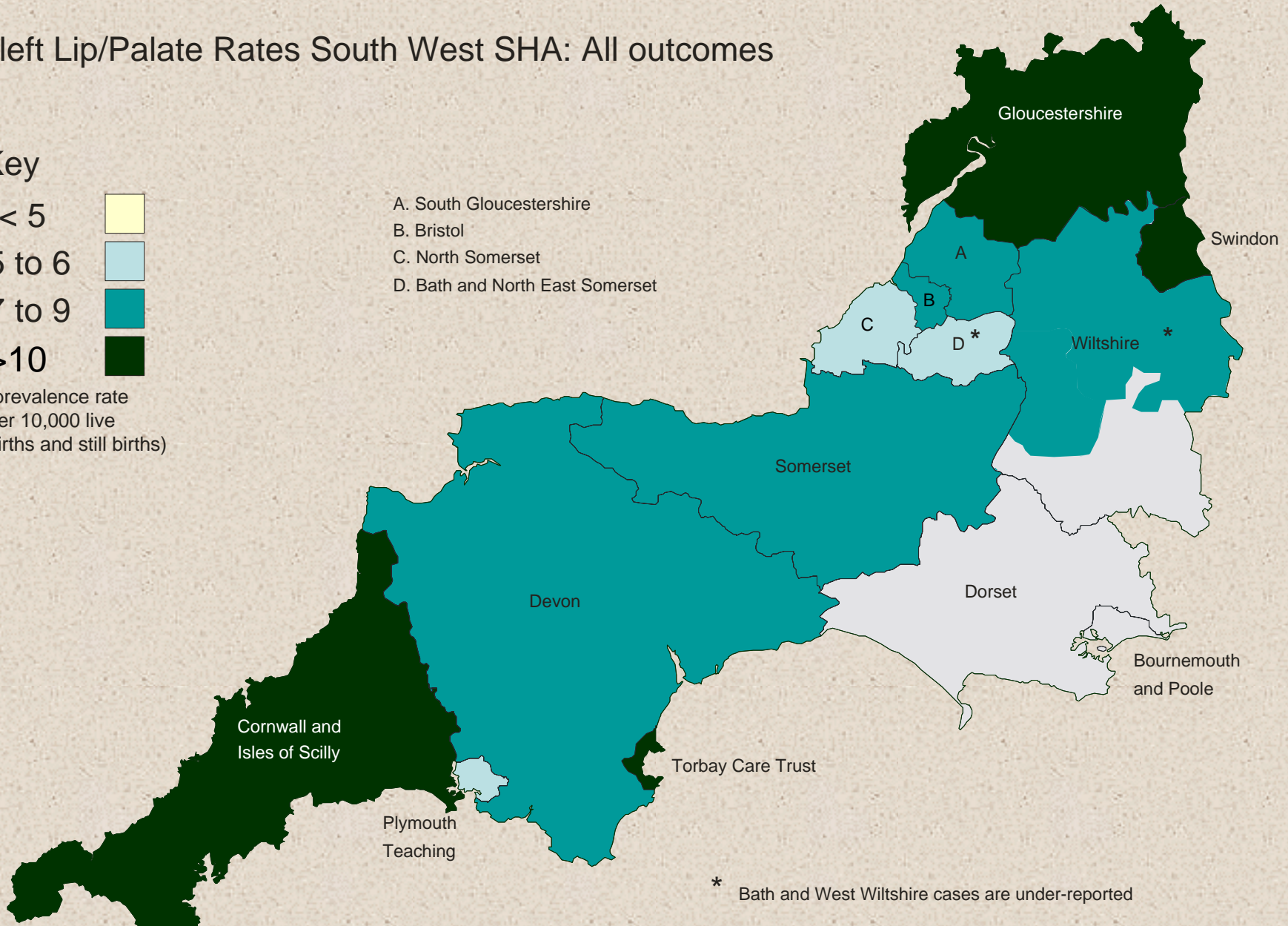
Aileen McLoughlin SWCAR Co-ordinator

Cleft Lip/Palate Rates South West SHA: All outcomes

Key



- A. South Gloucestershire
- B. Bristol
- C. North Somerset
- D. Bath and North East Somerset



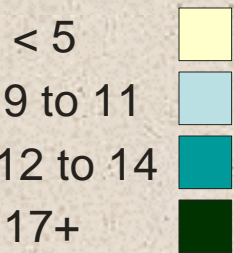
* Bath and West Wiltshire cases are under-reported

27th November 2006

Aileen McLoughlin SWCAR Co-ordinator

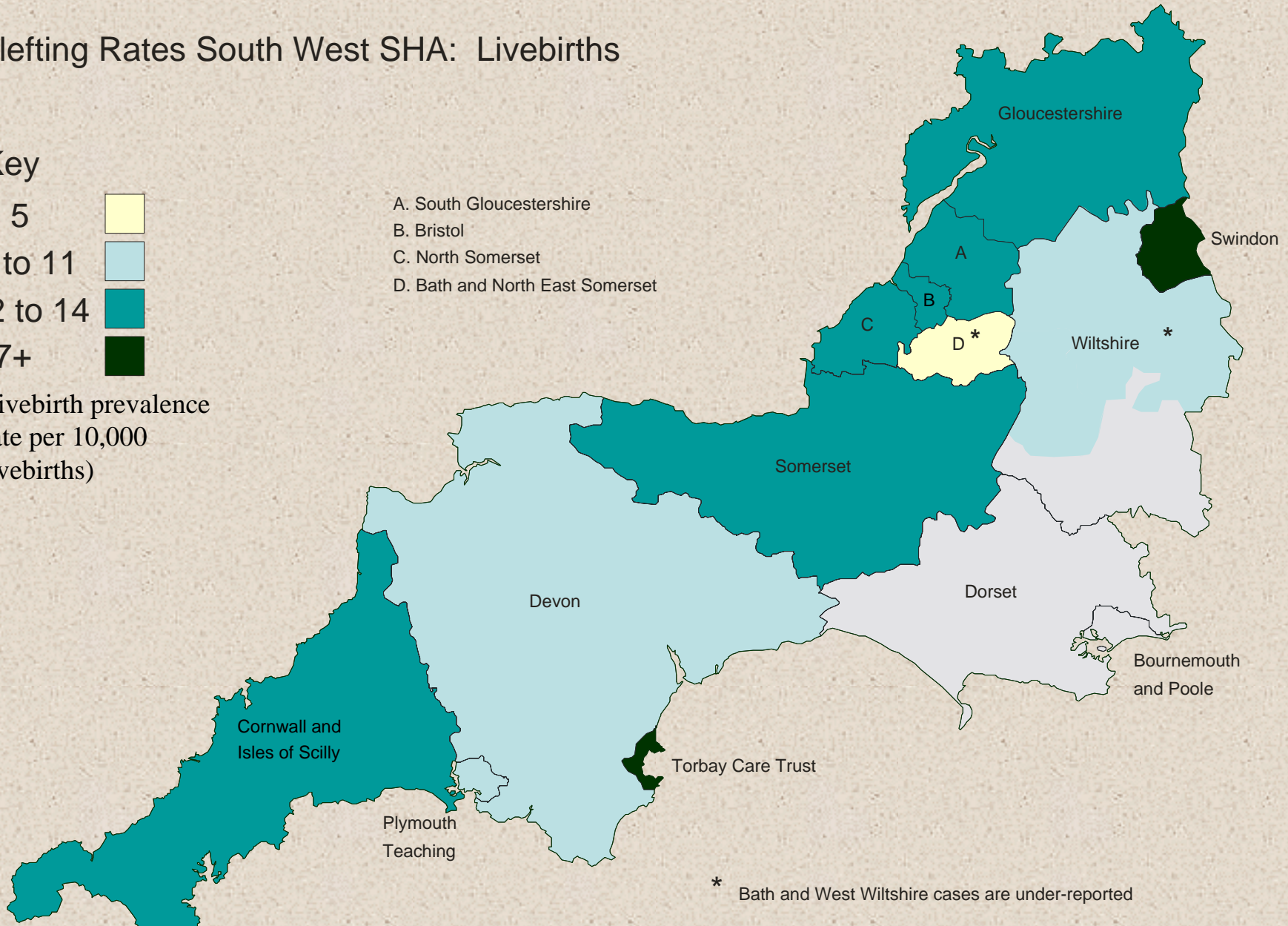
Clefting Rates South West SHA: Livebirths

Key



(livebirth prevalence rate per 10,000 livebirths)

- A. South Gloucestershire
- B. Bristol
- C. North Somerset
- D. Bath and North East Somerset



* Bath and West Wiltshire cases are under-reported

27th November 2006

Aileen McLoughlin SWCAR Co-ordinator

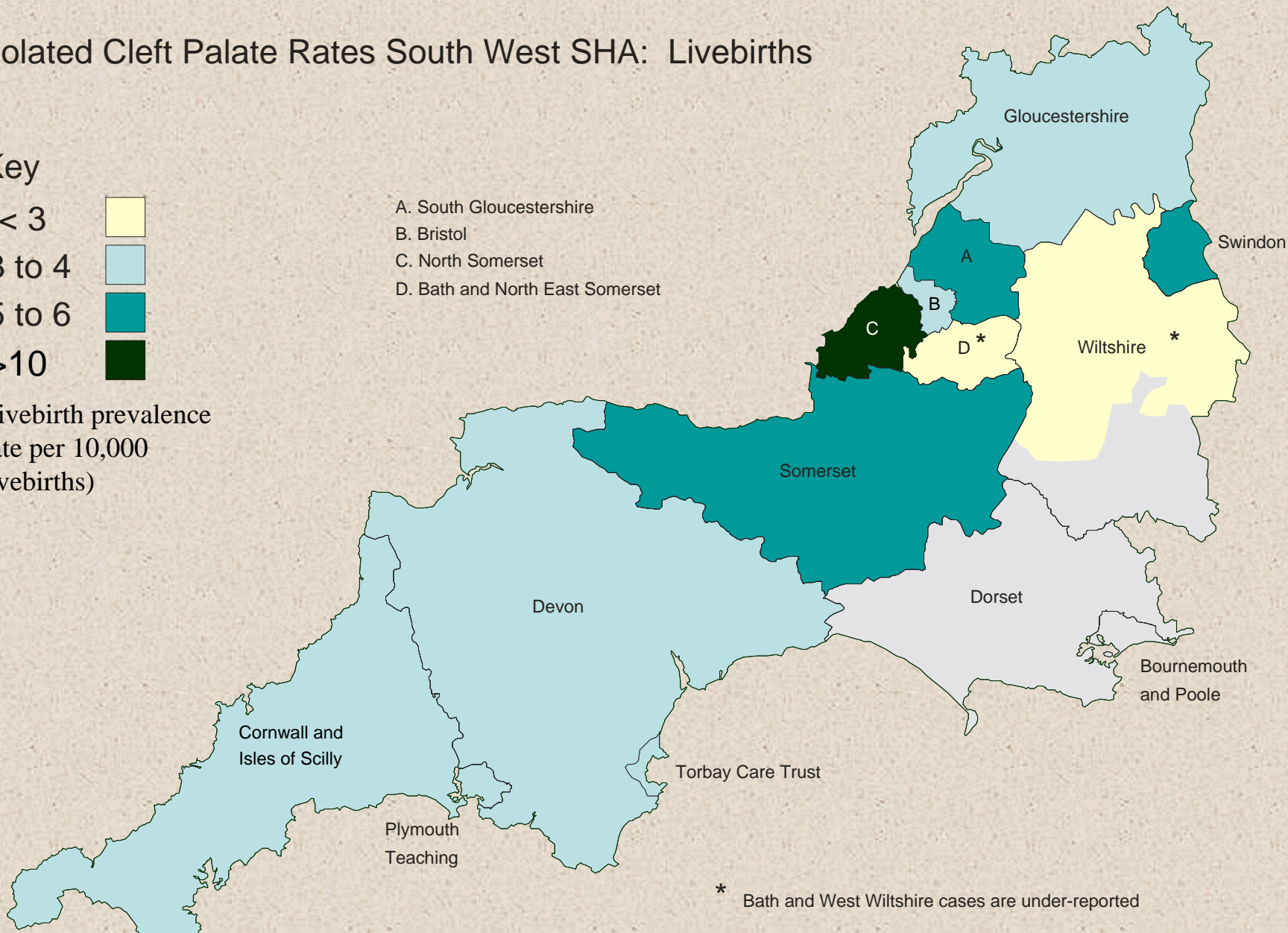
Isolated Cleft Palate Rates South West SHA: Livebirths

Key



(livebirth prevalence rate per 10,000 livebirths)

- A. South Gloucestershire
- B. Bristol
- C. North Somerset
- D. Bath and North East Somerset



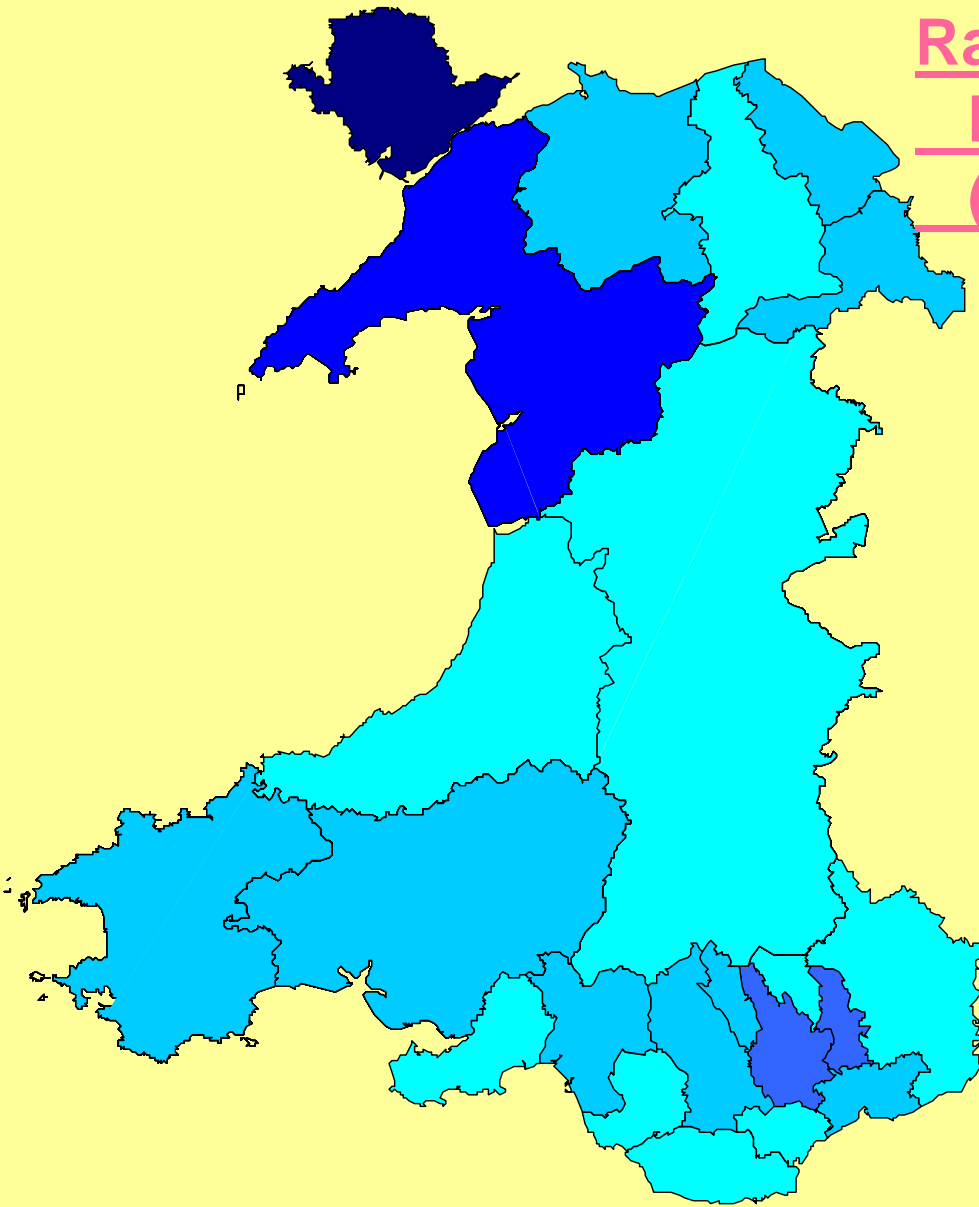
* Bath and West Wiltshire cases are under-reported

27th November 2006

Aileen McLoughlin SWCAR Co-ordinator

Rates of isolated cleft palate by Unitary Authority (1998 – 2005)

Rate 1.0-3.9
Rate 4.0 - 6.9
Rate 7.0 - 9.9
Rate 10.0 - 12.9
Rate 13.0 - 15.9



27th November 2006

Aileen McLoughlin SWCAR Co-ordinator

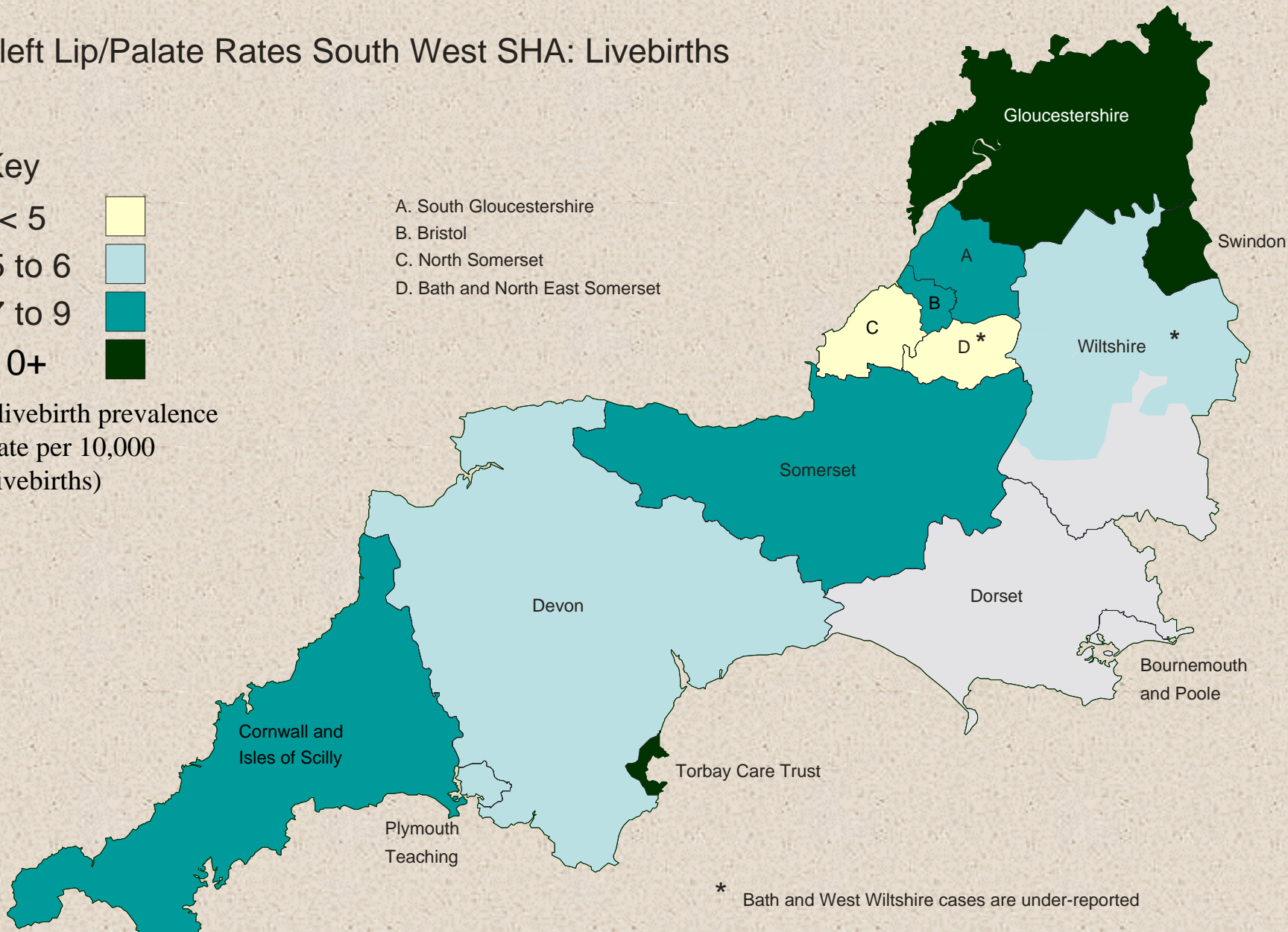
Cleft Lip/Palate Rates South West SHA: Livebirths

Key



(livebirth prevalence rate per 10,000 livebirths)

- A. South Gloucestershire
- B. Bristol
- C. North Somerset
- D. Bath and North East Somerset

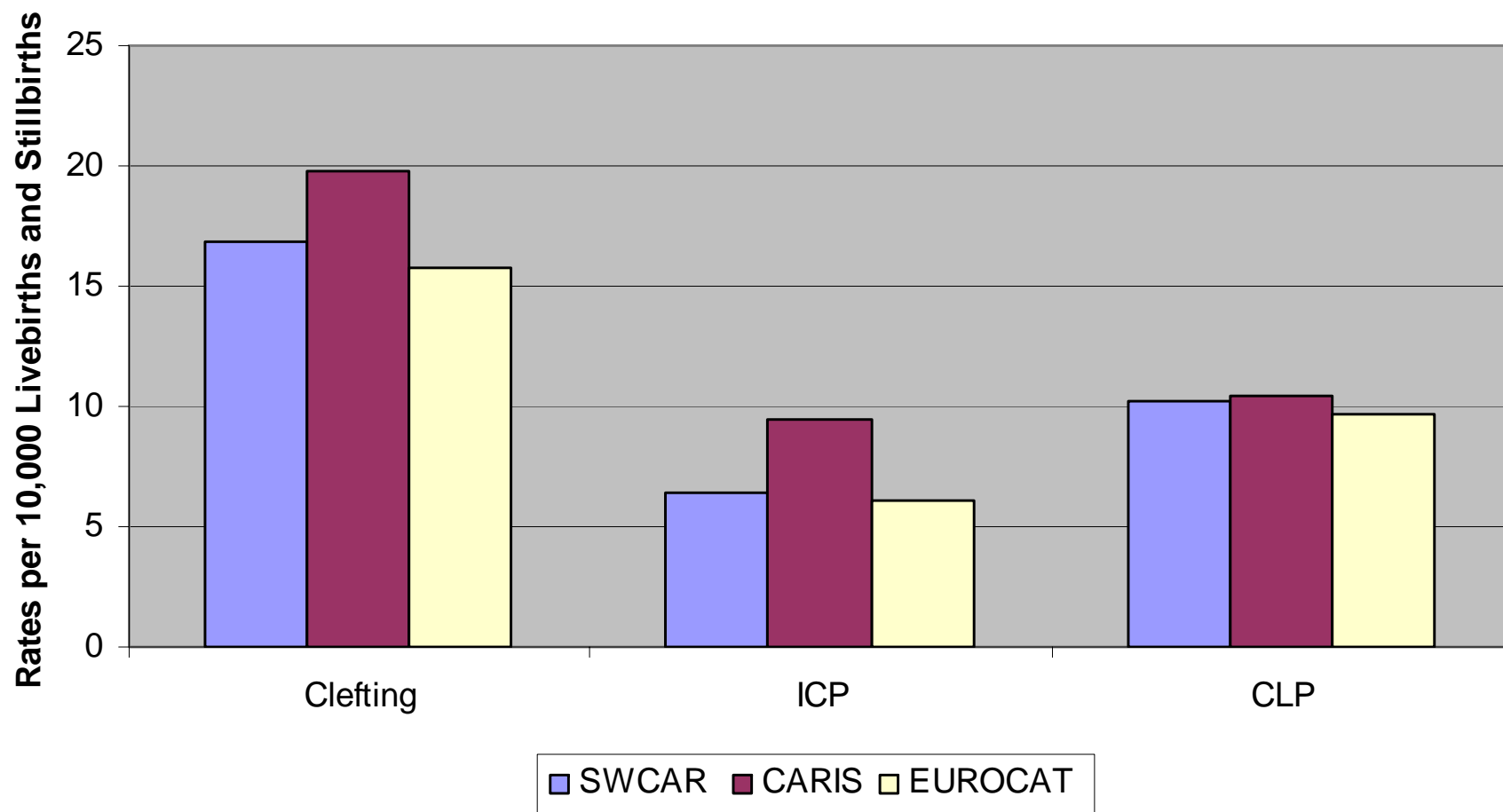


* Bath and West Wiltshire cases are under-reported

27th November 2006

Aileen McLoughlin SWCAR Co-ordinator

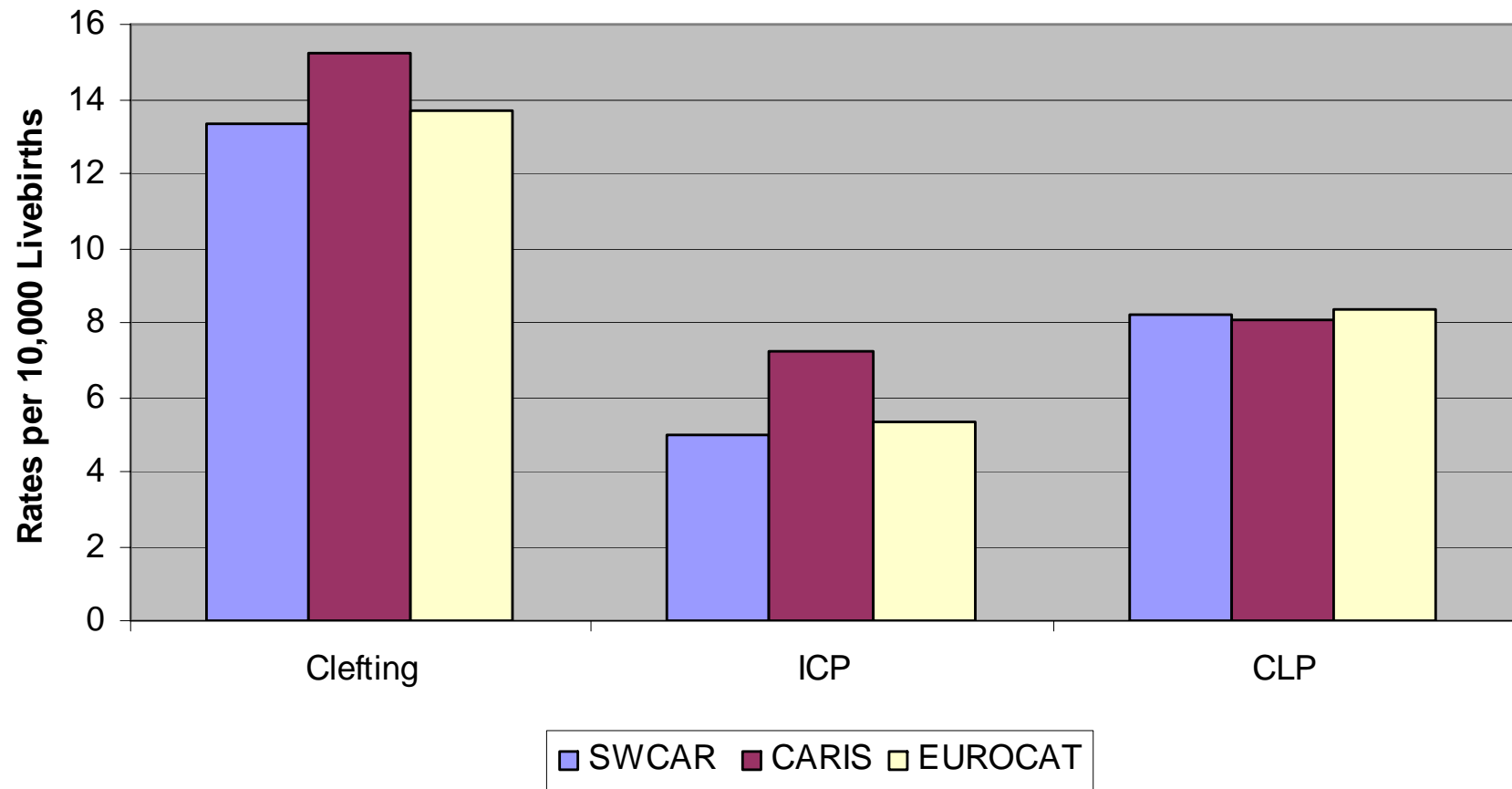
Comparative Rates of clefting 2002-4 All birth outcomes



27th November 2006

Aileen McLoughlin SWCAR Co-ordinator

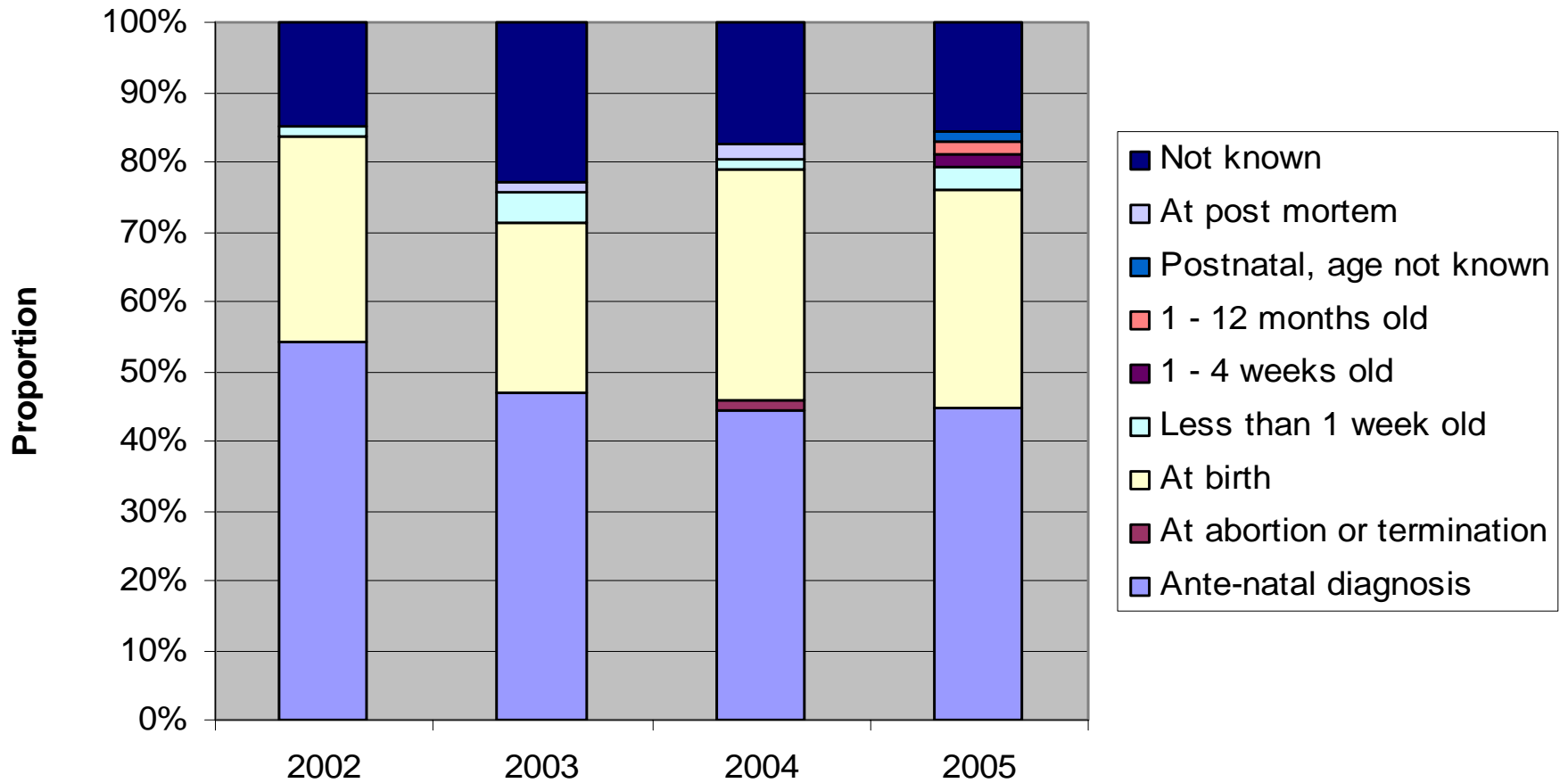
Comparative Rates of Clefting 2002-4 Livebirths



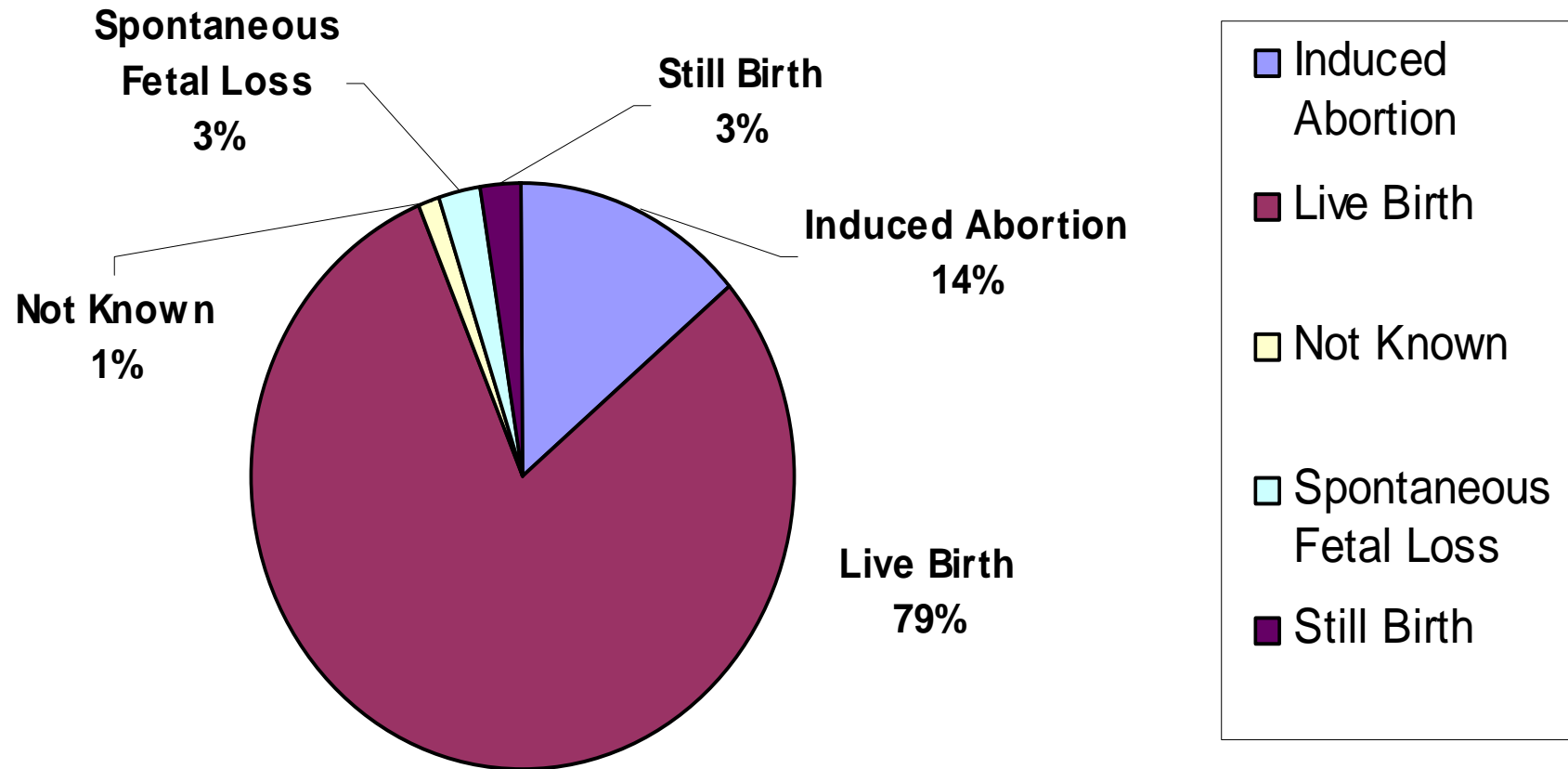
27th November 2006

Aileen McLoughlin SWCAR Co-ordinator

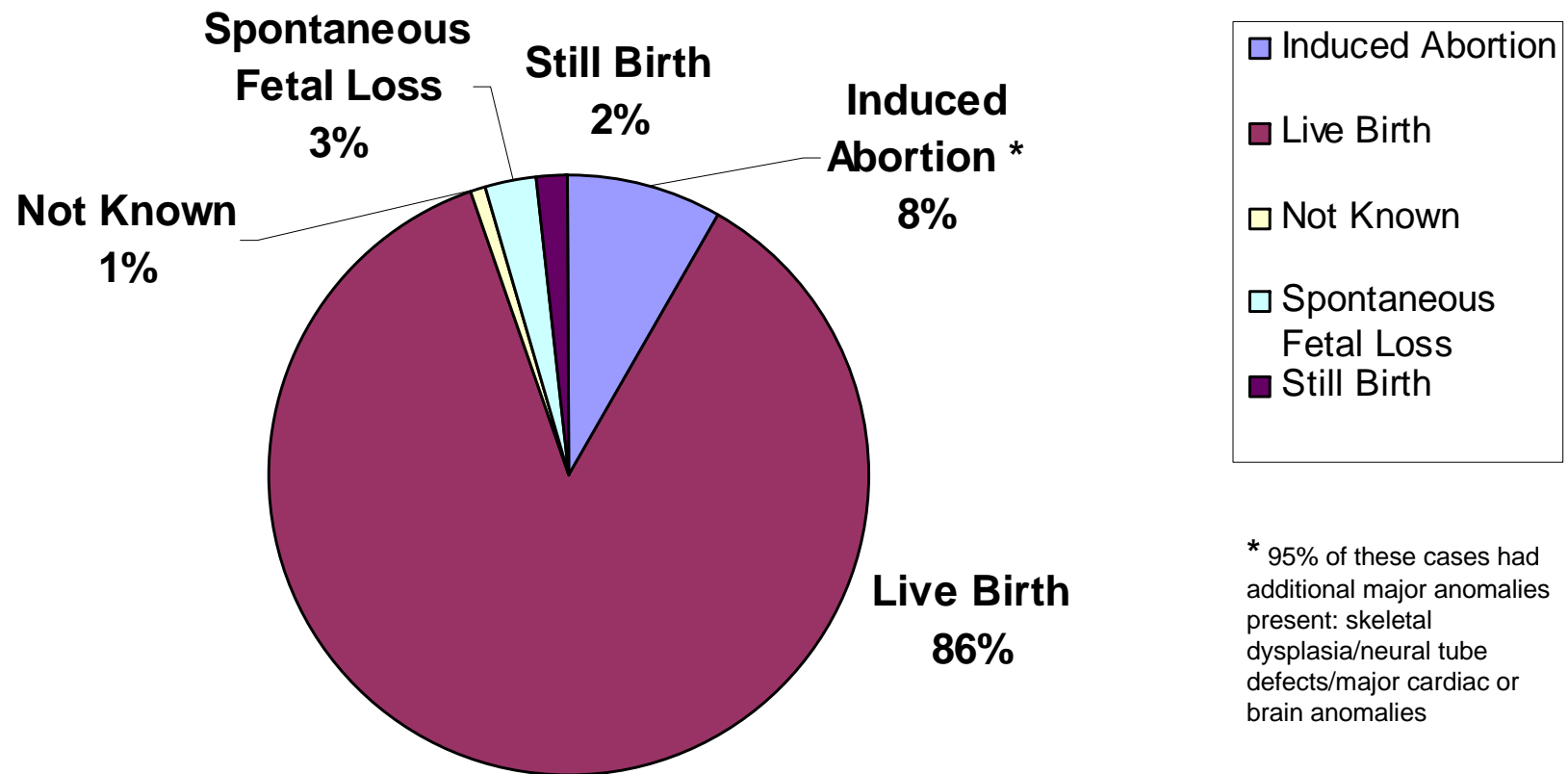
Time of Diagnosis by Year: All Clefting 2002-5



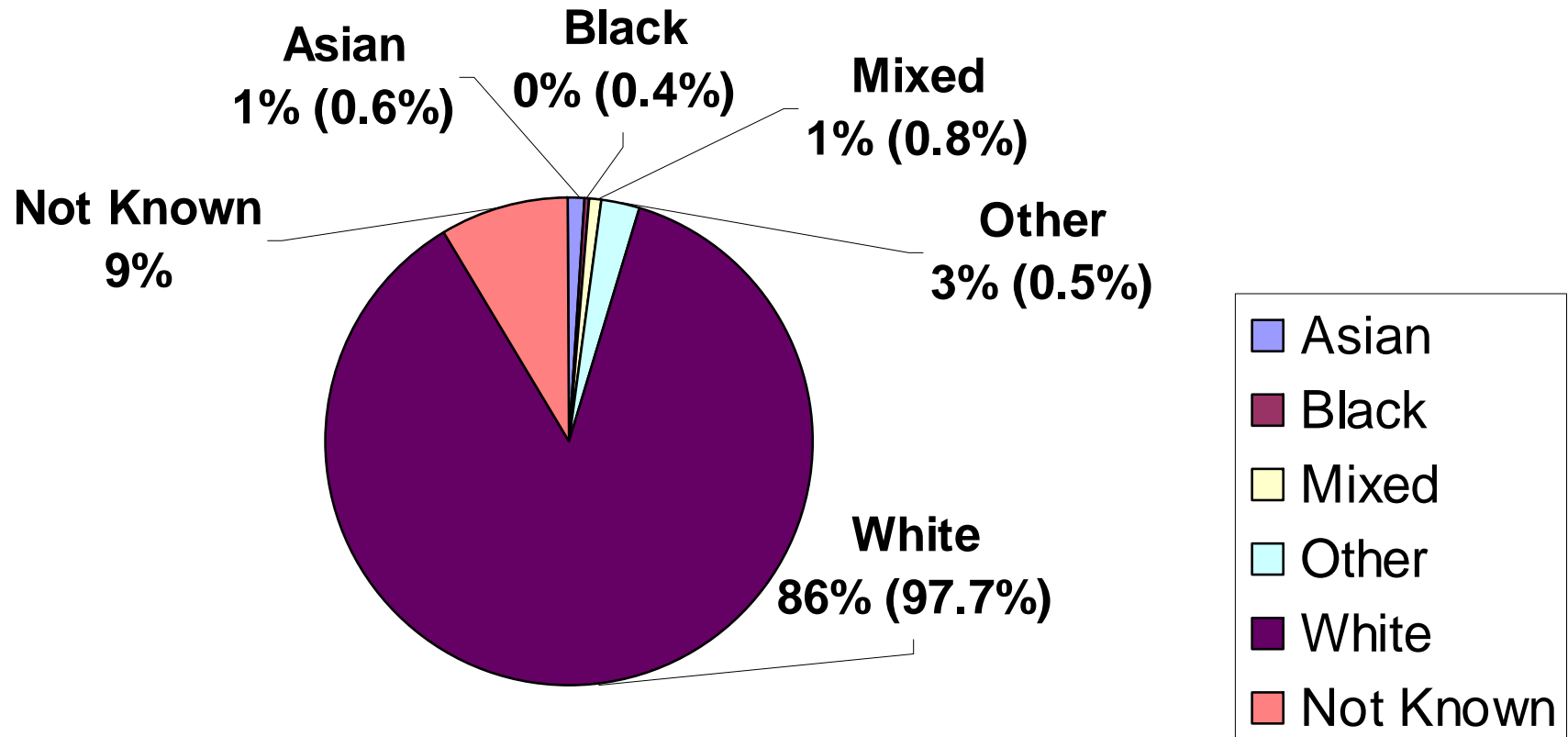
Outcome: All clefting SWCAR 2002-5



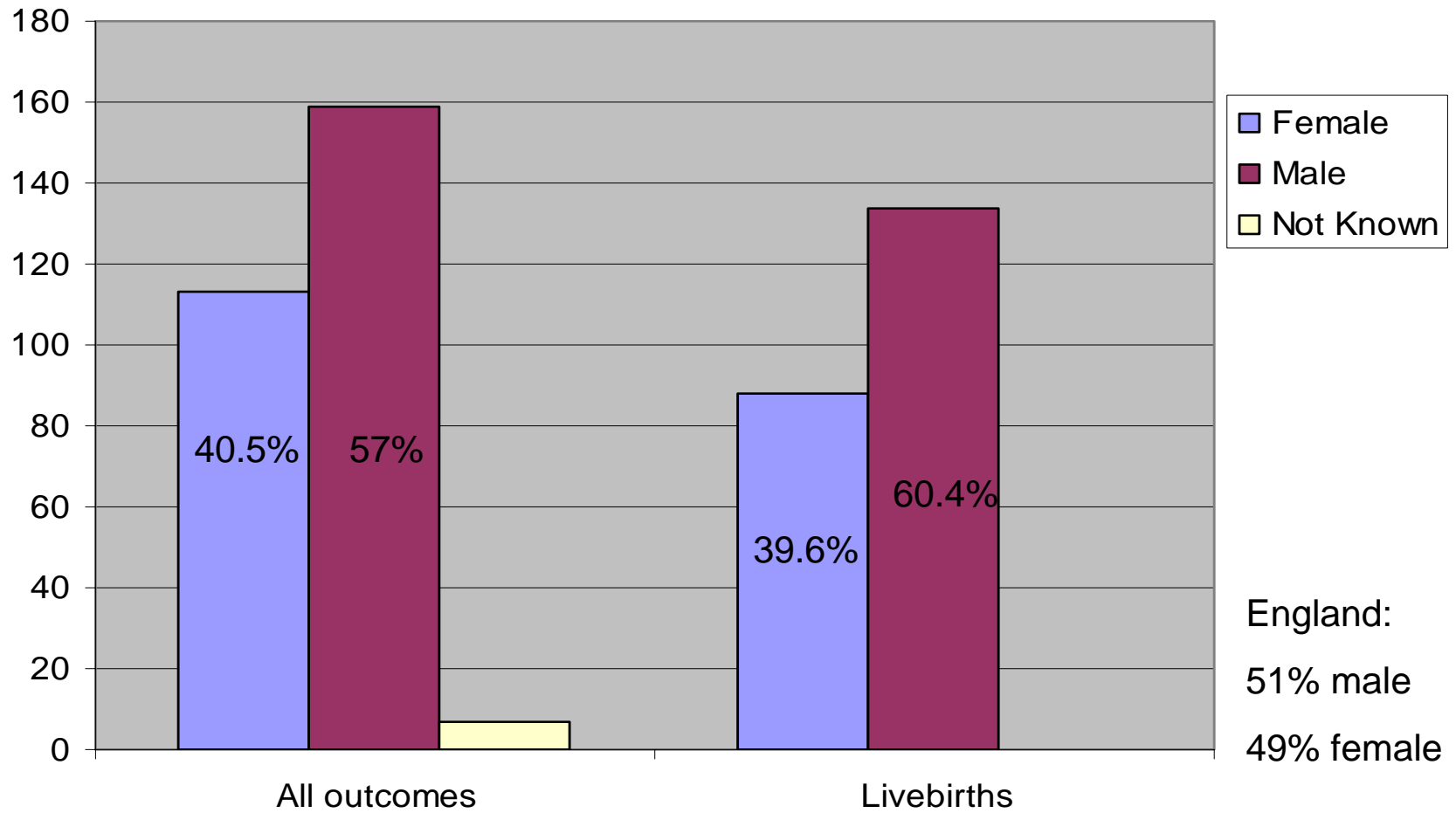
Outcome: All non-chromosomal clefting SWCAR 2002-5



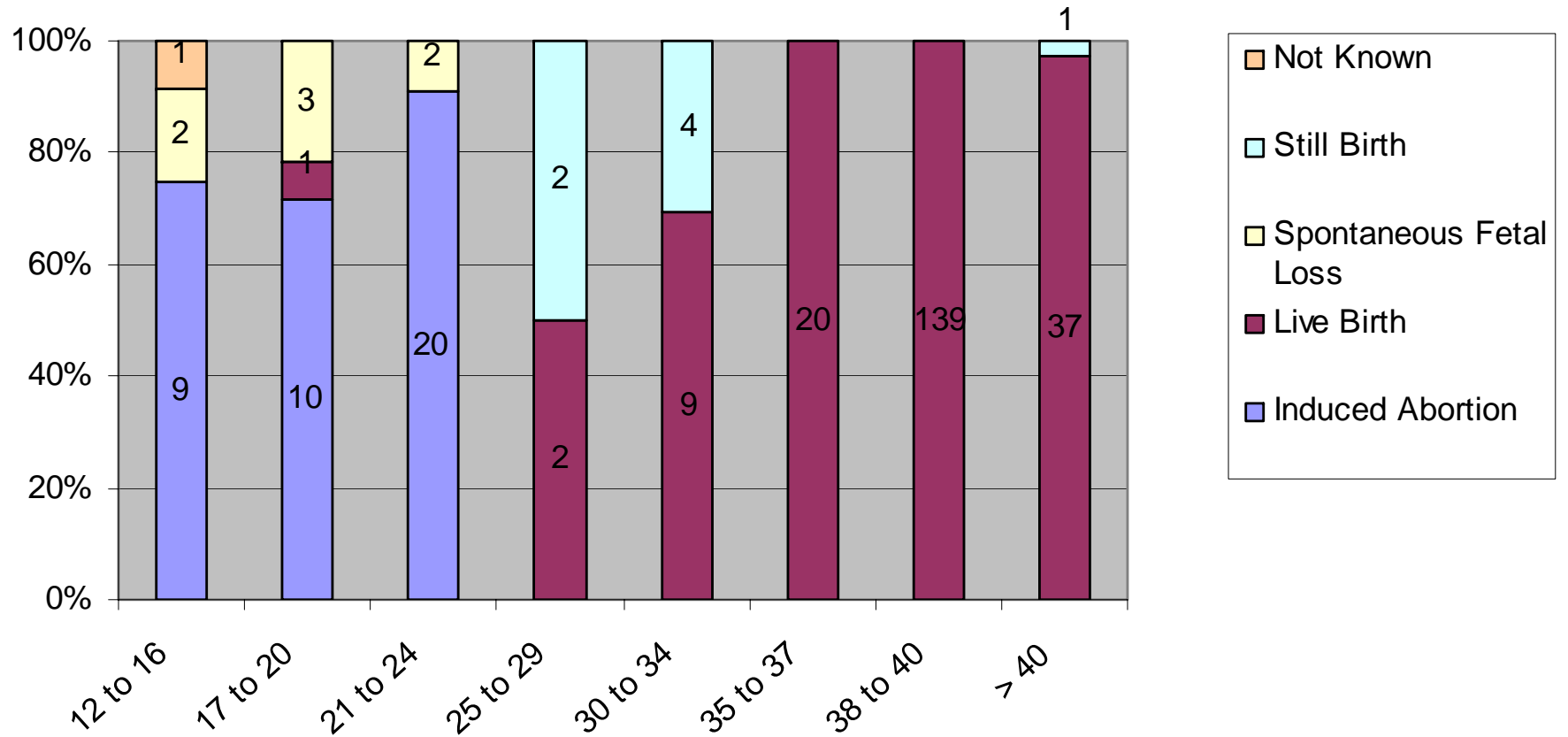
All clefting by ethnic category of mother (% in brackets give South West population ethnicity from the 2001 Census)



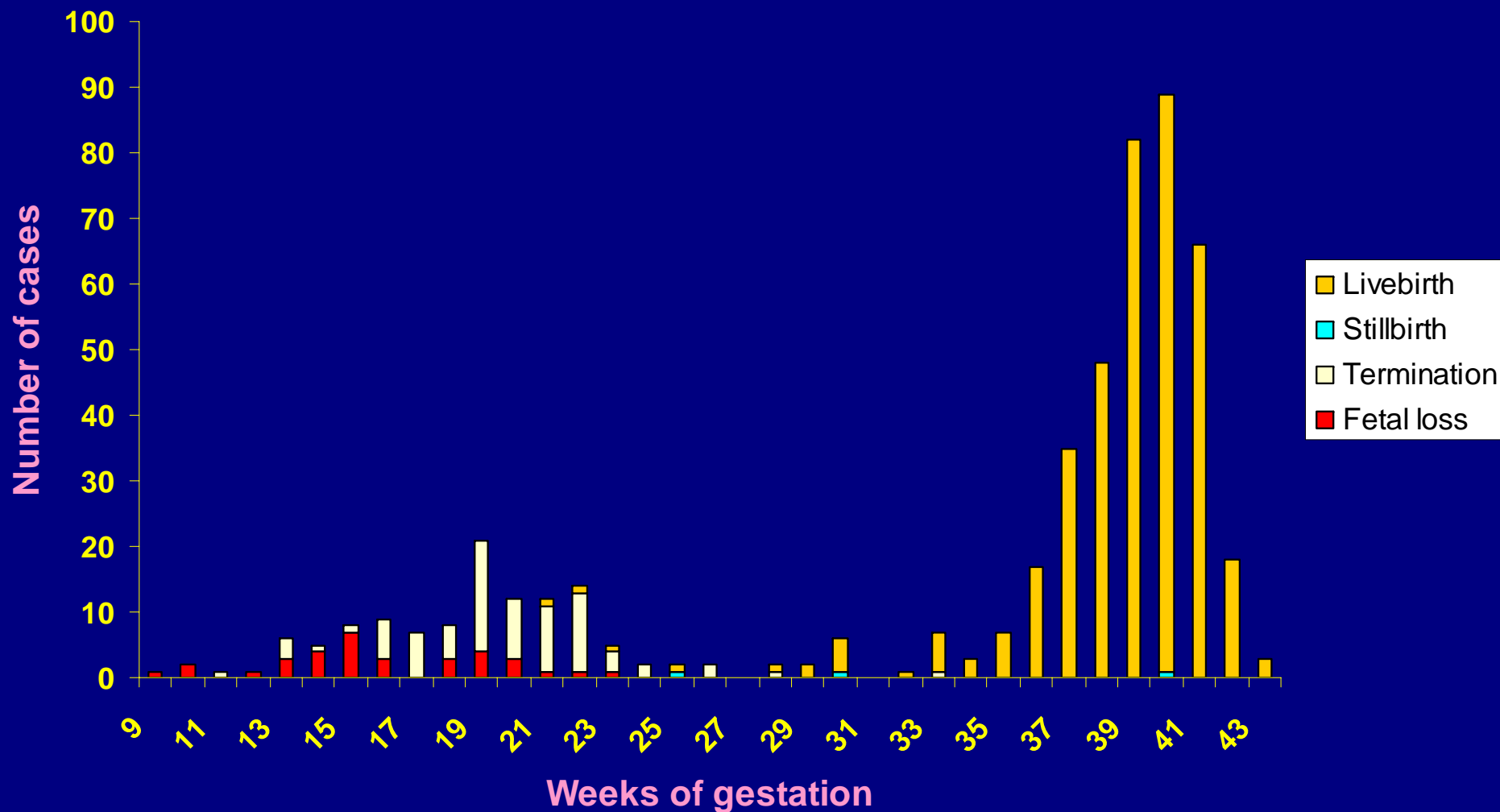
Clefting by gender: All Outcomes and Livebirths 2002-5



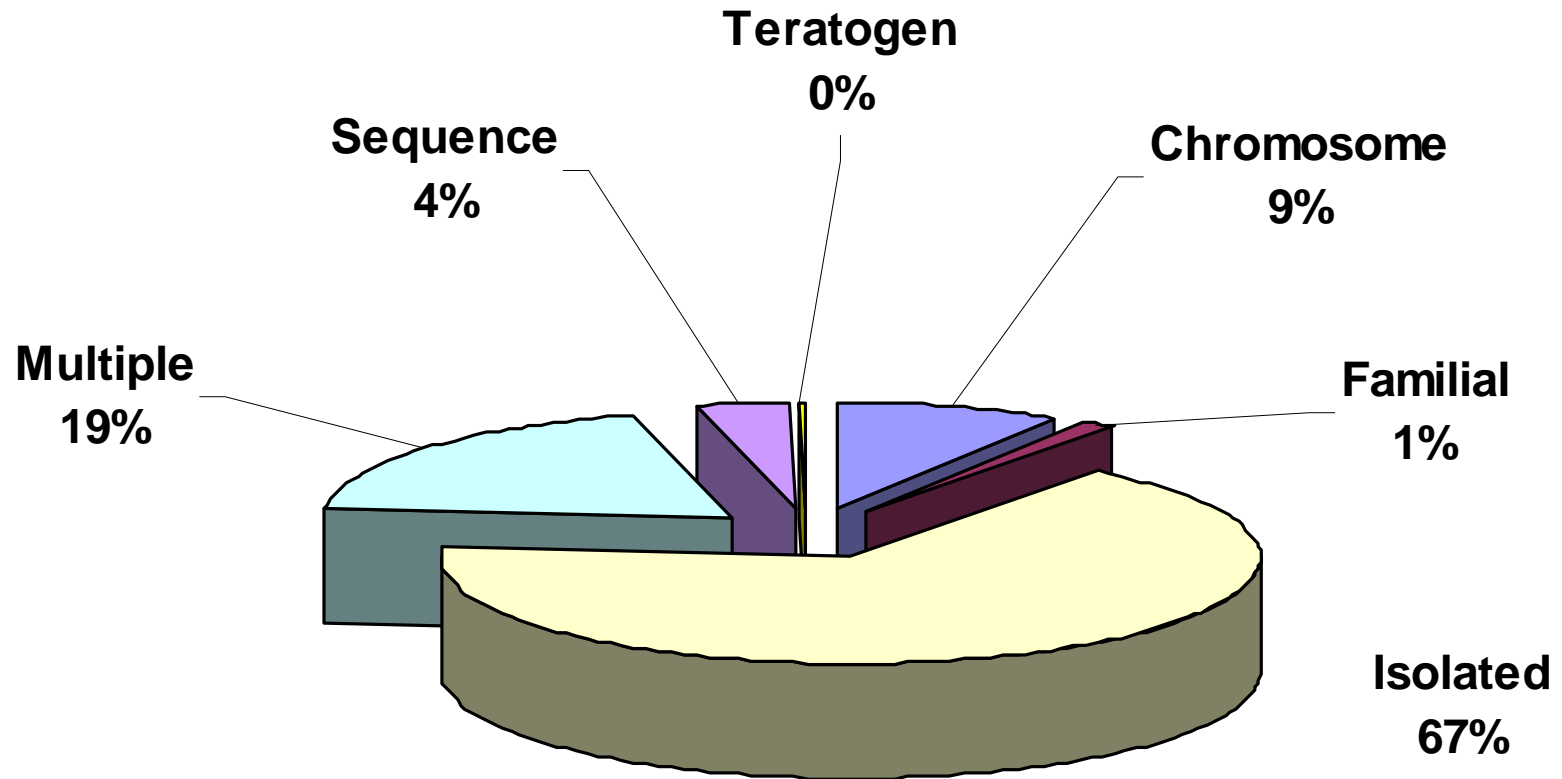
Outcome by gestational age: all clefting 2002-5



Outcome by gestational age for all clefts in Wales (1998-2005)

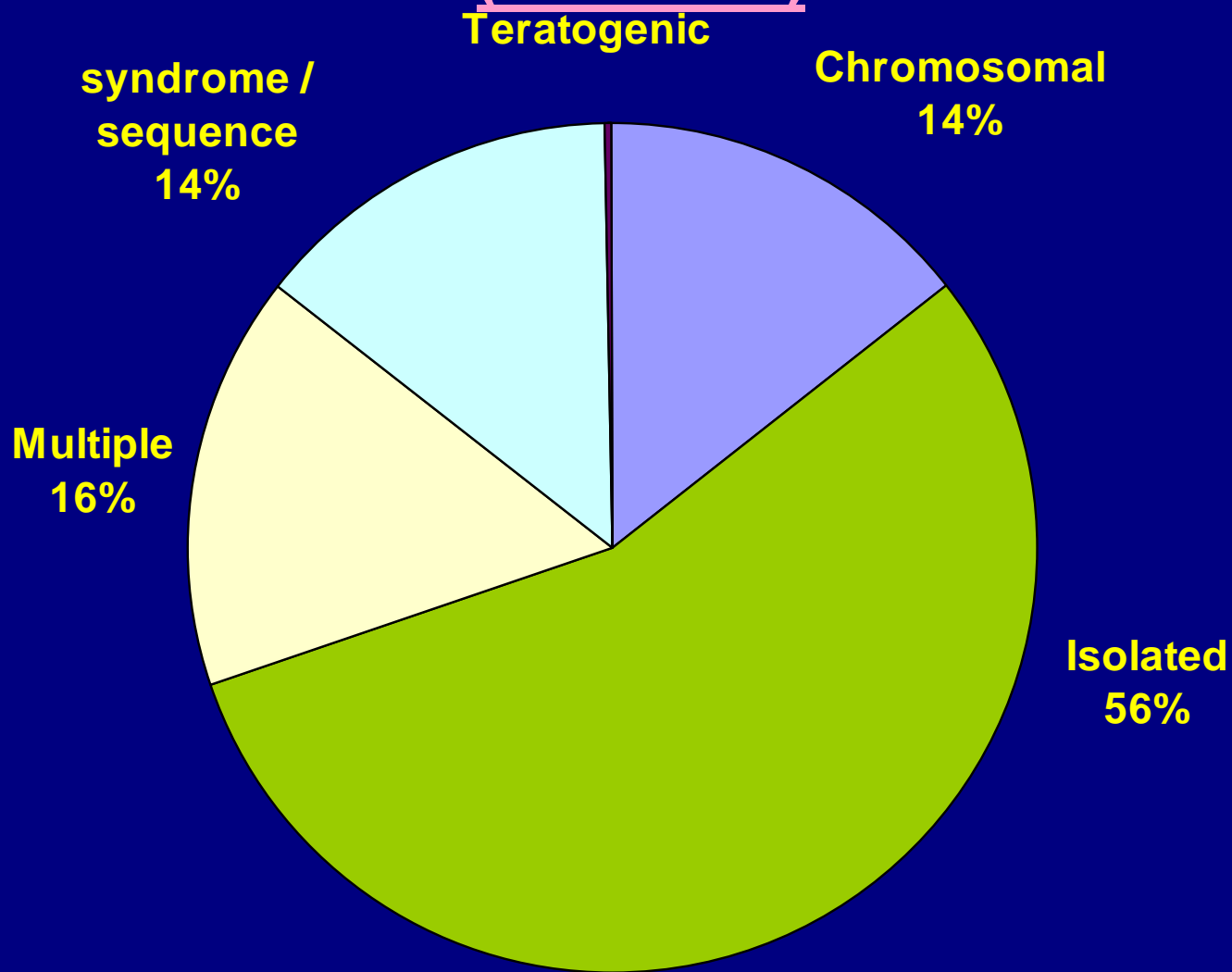


Clefting: aetiological classification SWCAR 2002-5

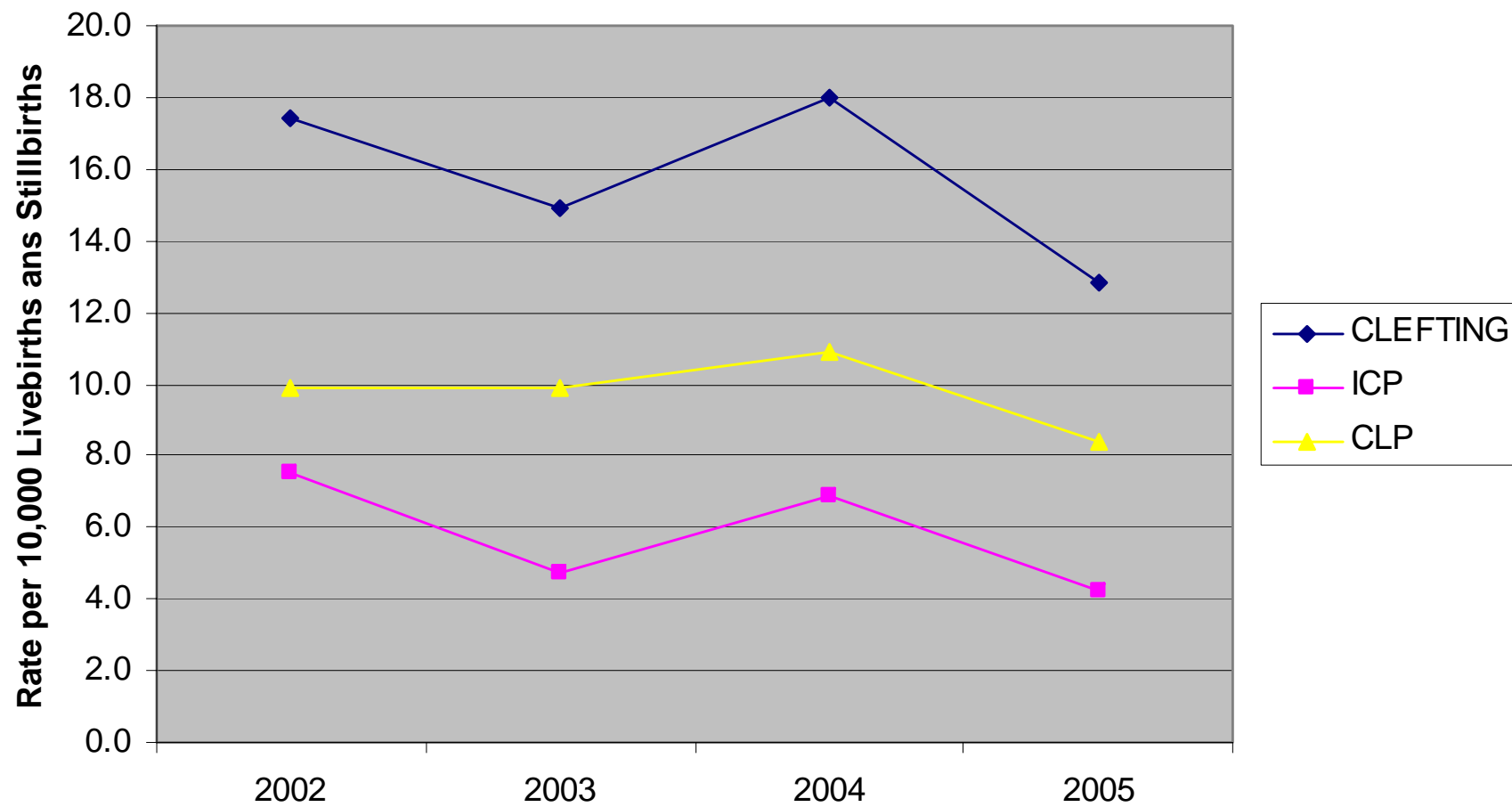


Sequences	
Pierre Robin	9
Vater	1
Chromosomal	
Edwards	6
Patau	12
Trisomy 9	1
Deletions	3
Unbalanced translocations	2
Triploidy	1
Other	1
Familial	
Short rib polydactyly syndrome	1
Lethal multiple pterygium syndrome	1
Oro-facial-digital syndrome type I	1
Treacher-Collins syndrome	1

All clefts in Wales by aetiological classification (1998-2005)



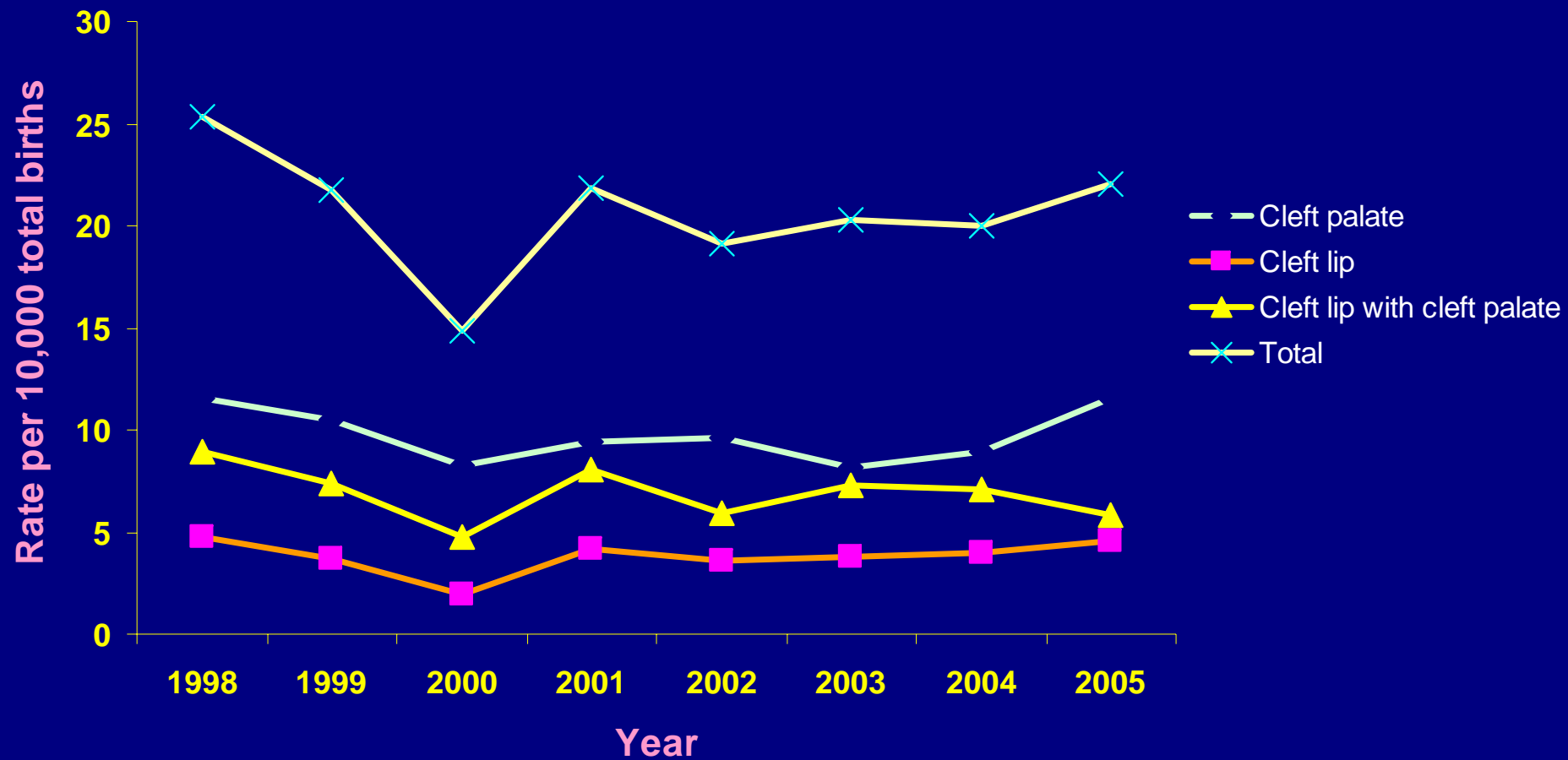
Time trend of South West Clefting 2002-2005



27th November 2006

Aileen McLoughlin SWCAR Co-ordinator

Time trend of Clefts in Wales (1998-2005)



27th November 2006

Aileen McLoughlin SWCAR Co-ordinator

South West Congenital Anomaly Register



The anomaly web site for the south west

- Anomaly rates for the region and hospitals
- Anomaly rates for conditions and body systems
- How and what to report
- All our leaflets and forms for download
- Links to over 150 support organisations
- Links to medical and genetics web sites
- All you need to know about the Register



www.swcar.org.uk